

College of Saint Benedict and Saint John's University

DigitalCommons@CSB/SJU

Celebrating Scholarship and Creativity Day
(2018-)

Undergraduate Research

4-25-2024

Mapping the Boy Scouts in Central Minnesota

Michael Oehler

College of Saint Benedict/Saint John's University

Follow this and additional works at: https://digitalcommons.csbsju.edu/ur_cscday



Part of the [Geographic Information Sciences Commons](#)

Recommended Citation

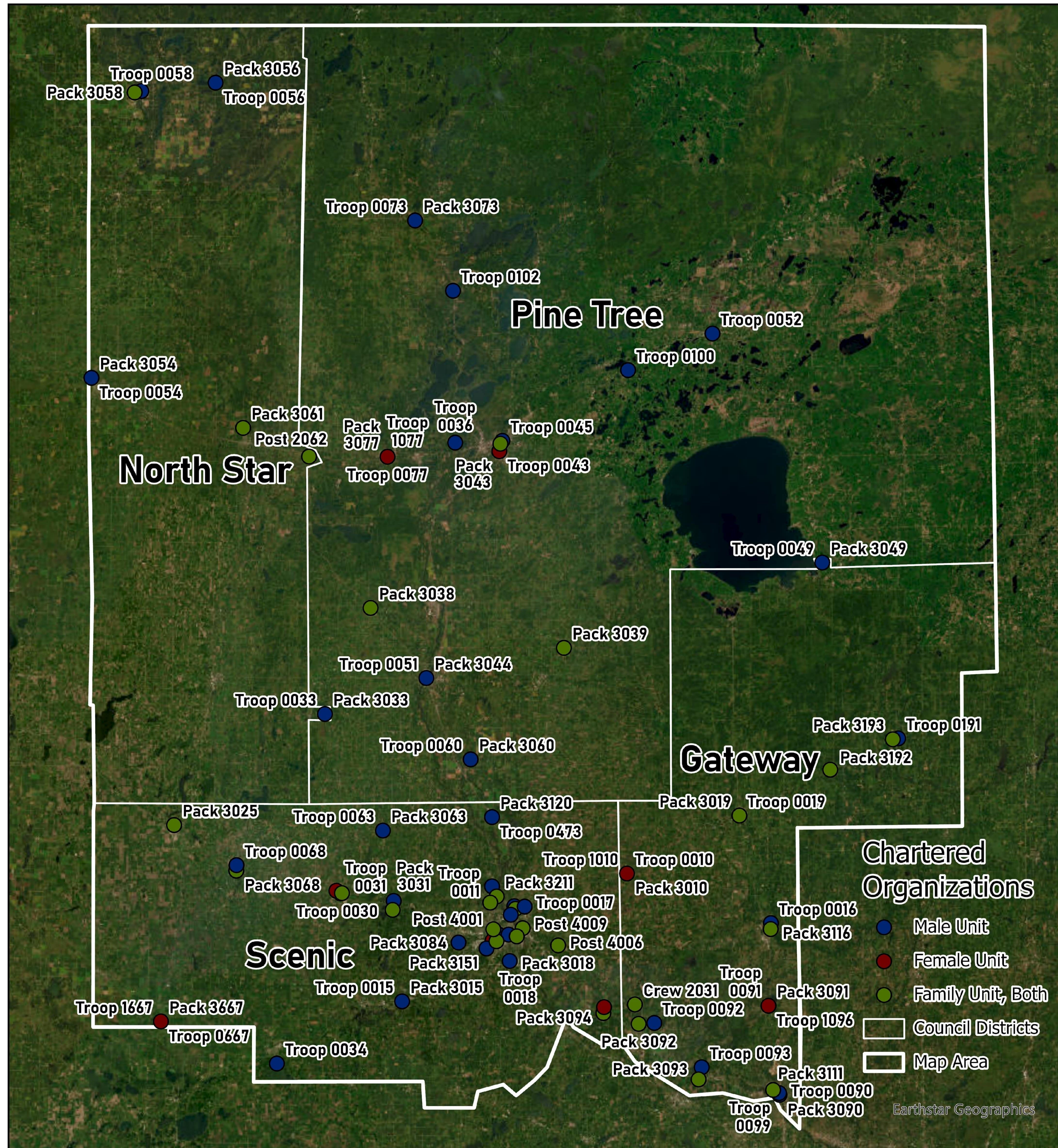
Oehler, Michael, "Mapping the Boy Scouts in Central Minnesota" (2024). *Celebrating Scholarship and Creativity Day (2018-)*. 240.

https://digitalcommons.csbsju.edu/ur_cscday/240

This Poster is brought to you for free and open access by DigitalCommons@CSB/SJU. It has been accepted for inclusion in Celebrating Scholarship and Creativity Day (2018-) by an authorized administrator of DigitalCommons@CSB/SJU. For more information, please contact digitalcommons@csbsju.edu.

Mapping the Boy Scouts in Central Minnesota

By Michael Oehler



COLLEGE OF
Saint Benedict

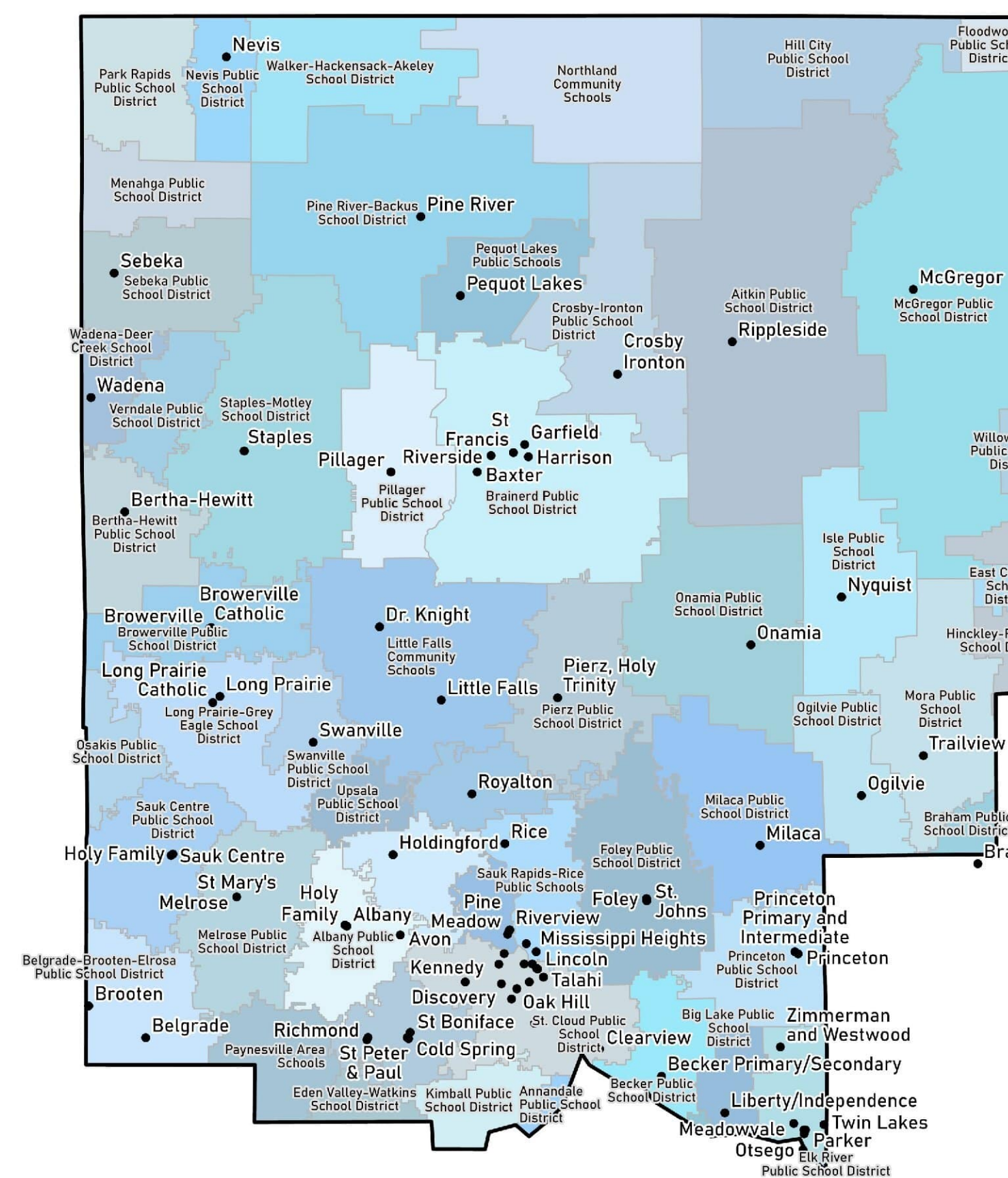
Saint John's
UNIVERSITY



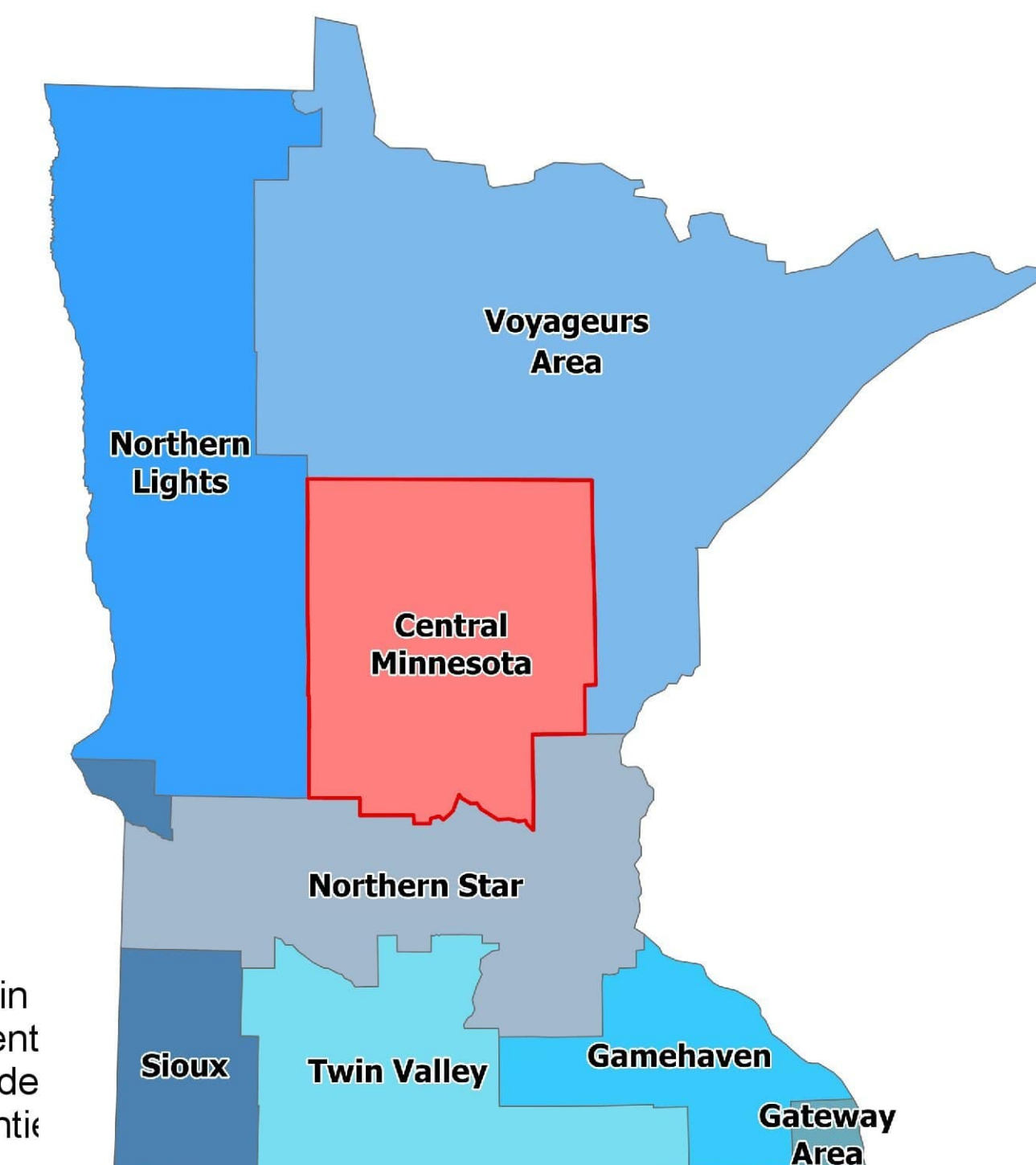
The Boy Scouts Central Minnesota Council

The purpose of this project was to display important information about the local Boy Scouts of America Council in a simple and easy to understand format. The primary map displays all of the different chartered organizations of the Boy Scouts as well as the administrative regions of the wider Council area. As the borders are not well defined, the ones displayed were estimated using communities listed on the official Council website, combined with locations and listed regions of the addresses of local chapters. All the Troops, Packs, and Posts were labeled by accepted gender and had their address plotted along with their designated identifying number. This reveals several interesting features, most notably the dense concentration that is St. Cloud and the relatively low density in the North.

I also produced several secondary maps that display more information important to the local Boy Scouts of America. The first shows all the school districts within the Council area and all the schools with active recruiting drives. The second map presents all Council areas in Minnesota with Central Minnesota highlighted. The maps were built in ArcGIS Pro in cooperation with Gerry Granum of the BSA, using resources provided by the Boy Scouts directly and from their website. Additionally, world imagery from Esri was used in several base maps.



Map of all the School Districts and local schools with active recruiting drives, including some schools just outside the area that are nonetheless served by The Central Minnesota Council



Map of all the Boy Scouts Councils in Minnesota. The area displayed in primary map is the Central Minnesota Council, which serves Stearns, Bent, Sherburne, Mille Lacs, Kanabec, Crow, Wing, Cass, Aitkin, Hubbard, Todd, and Morrison counties.