

College of Saint Benedict and Saint John's University

**DigitalCommons@CSB/SJU**

---

Archives History Lessons

Archives

---

2011

## **Sustainability: Sustained for 150+ Years!**

Peggy L. Roske

*College of Saint Benedict/Saint John's University*, [proske@csbsju.edu](mailto:proske@csbsju.edu)

Follow this and additional works at: [https://digitalcommons.csbsju.edu/archives\\_history\\_lessons](https://digitalcommons.csbsju.edu/archives_history_lessons)

---

### **Recommended Citation**

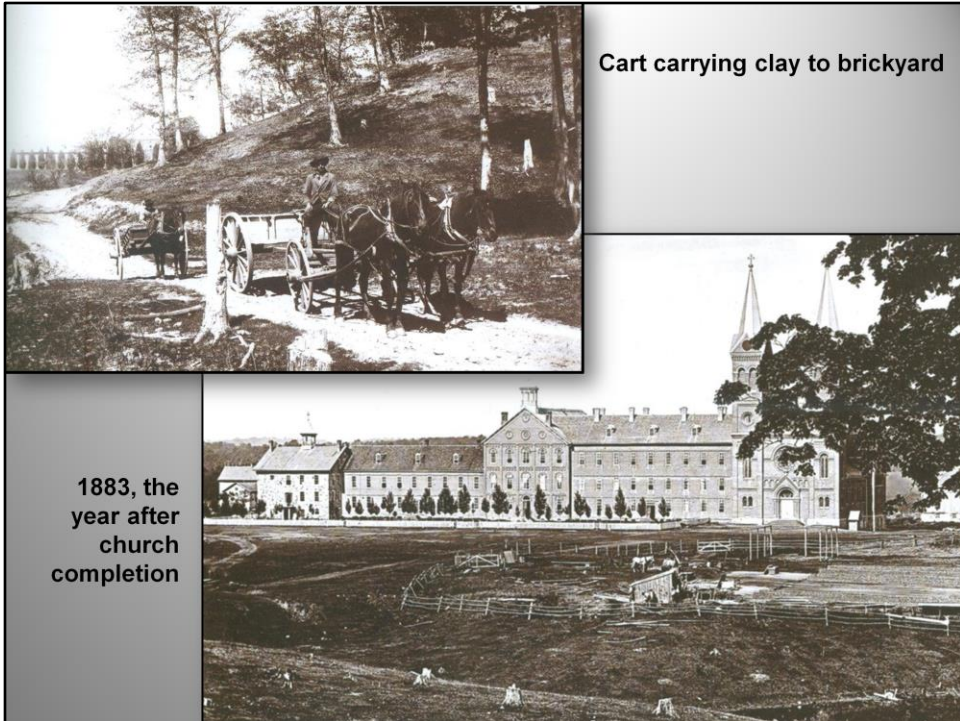
Roske, Peggy L., "Sustainability: Sustained for 150+ Years!" (2011). *Archives History Lessons*. 86.  
[https://digitalcommons.csbsju.edu/archives\\_history\\_lessons/86](https://digitalcommons.csbsju.edu/archives_history_lessons/86)

This Presentation is brought to you for free and open access by DigitalCommons@CSB/SJU. It has been accepted for inclusion in Archives History Lessons by an authorized administrator of DigitalCommons@CSB/SJU. For more information, please contact [digitalcommons@csbsju.edu](mailto:digitalcommons@csbsju.edu).

# **Sustainability – Sustained for 150+ years!**



Sustainability – Sustained for 150+ years!



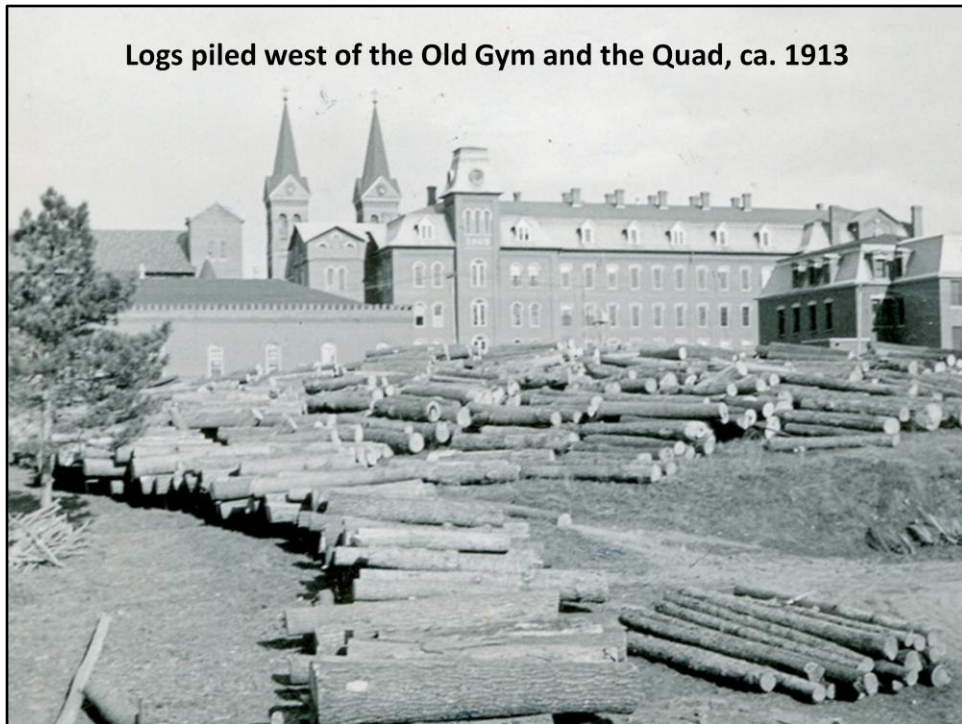
Brickmaking, 1880s

Bottom photo: **066 – 1883. Main Quadrangle with what became known as the Old Stone House, the first permanent structure on the present Saint John’s site, shown at far left. Between the Stone House and the Quadrangle is the “south wing,” rebuilt as a three story structure after the cyclone of 1927. (Ascheman collection caption)**



Wood for fuel, 1889

**012 – February 1889.** In the early days the Quadrangle and other buildings had to be heated with wood burning stoves. Here huge quantities of cord wood are being sledded across a frozen Lake Sagatagan to provide heat for the campus community. (Ascheman collection caption)



Logs piled ca. 1913

**013b – Circa 1913. Logging west of the Main Quadrangle. Saint John's Abbey, through its land management program and Arboretum, continues to manage its forests in a sustainable manner and was certified as well-managed by the Forest Stewardship Council through SmartWood. (Ascheman collection caption)**





Original power plant, 1888

**118 – 1888. The original power plant. The huge stacks of cord wood used to heat facilities prove that biomass fuels are not something new. In 2006, the present day power plant heats all buildings on the main campus while producing about a quarter of the electricity consumed. (Ascherman collection caption)**

A dam at the north end of Stumpf (Watab) Lake provided some of the power to the campus



Flynntown and Watab dam

**155 – 1915. Flynntown and Watab dam. A home was built on the north shore of the Watab (now often referred to as Stumpf Lake) for Coach Edward Flynn. Around this house arose the famous hamlet of Flynnville – later called Flynntown. (Ascherman collection caption)**



St. John's sawmill, late 1800s

St. John's sawmill, late 1800s

**011 – Late 1800s. Br. Julius Terfehr operates the Saint John's sawmill. Most of the timber used in construction of the Main Quadrangle was harvested from the woods and milled for construction on the premises. Br. Julius later became a founding monk of St. Maur's Priory in Kentucky. (Aschman collection caption)**





Abbey Woodworking Shop

**194 – Unknown. Br. Hubert Schneider (1902-1995). Working in the Abbey Woodworking Shop (Ascheman collection caption)**

**Before 1874: Cows graze on the site of the future monastic gardens**



Grazing cows

**196 – Pre-1874. Are the cows out or were they allowed campus-wide access?  
(Ascherman collection caption)**



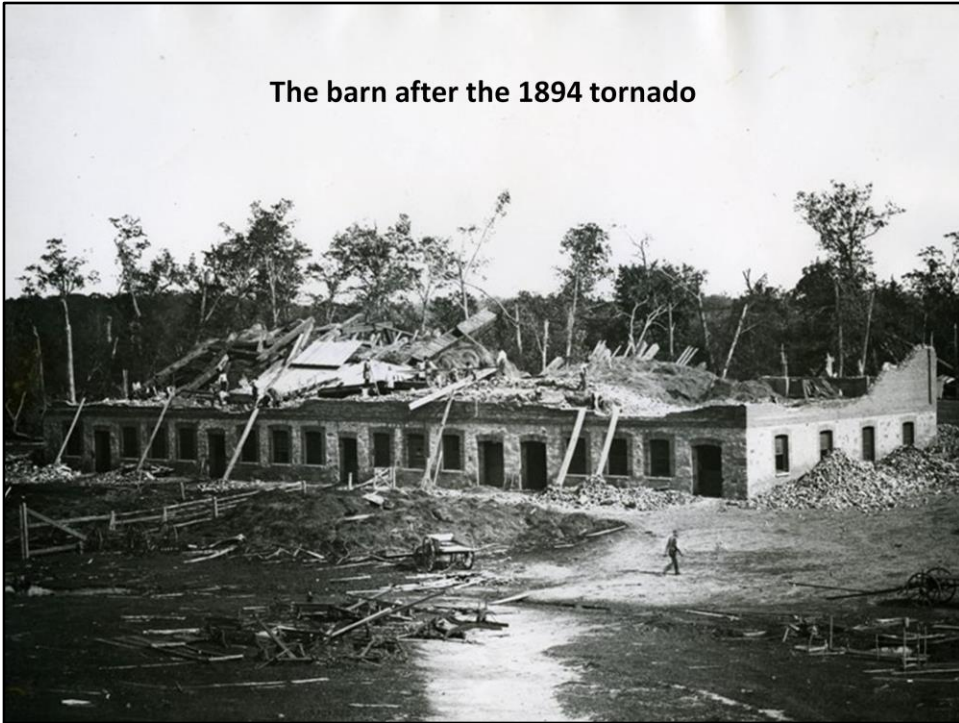
First brick barn, 1890

First brick barn, 1890

**016 – Circa 1890. Construction of the first brick barn. During most of its first century, Saint John's remained self-sufficient for milk, meat, and vegetables. (Ascherman collection caption)**

***Typed on back of photo (and visible!): "While the first brick barn was building [sic] in 1890."***

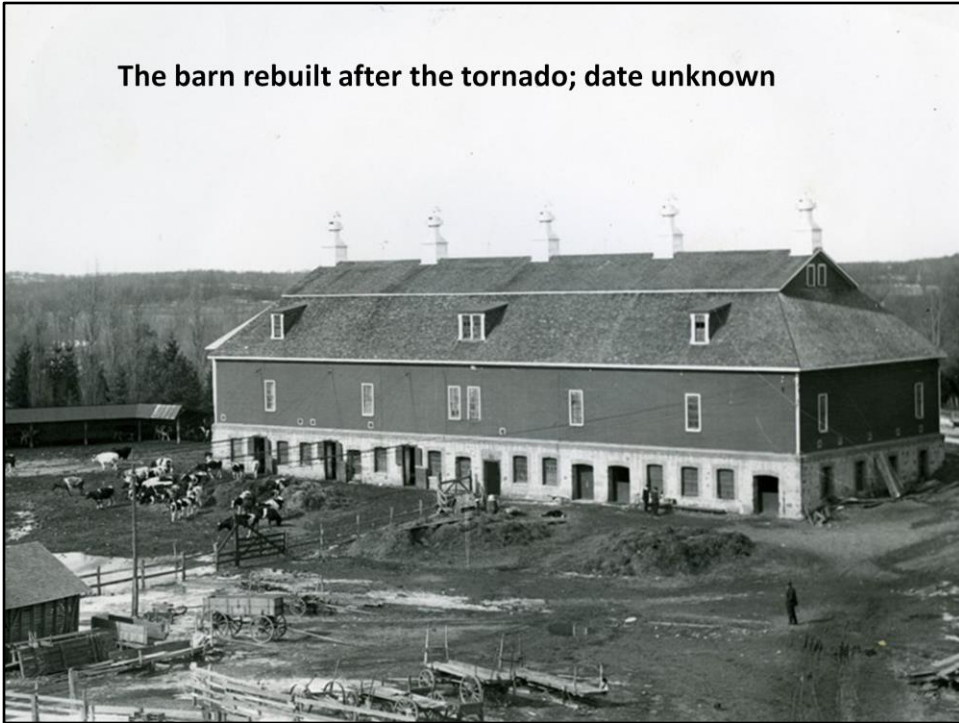
The barn after the 1894 tornado



Barn after the 1894 tornado

~~018 – 1927 Dairy barn after the fire of 1927.~~ June 1894. The 1894 cyclone destroyed the dairy barn and severely damaged several other campus buildings. (Ascherman collection caption)

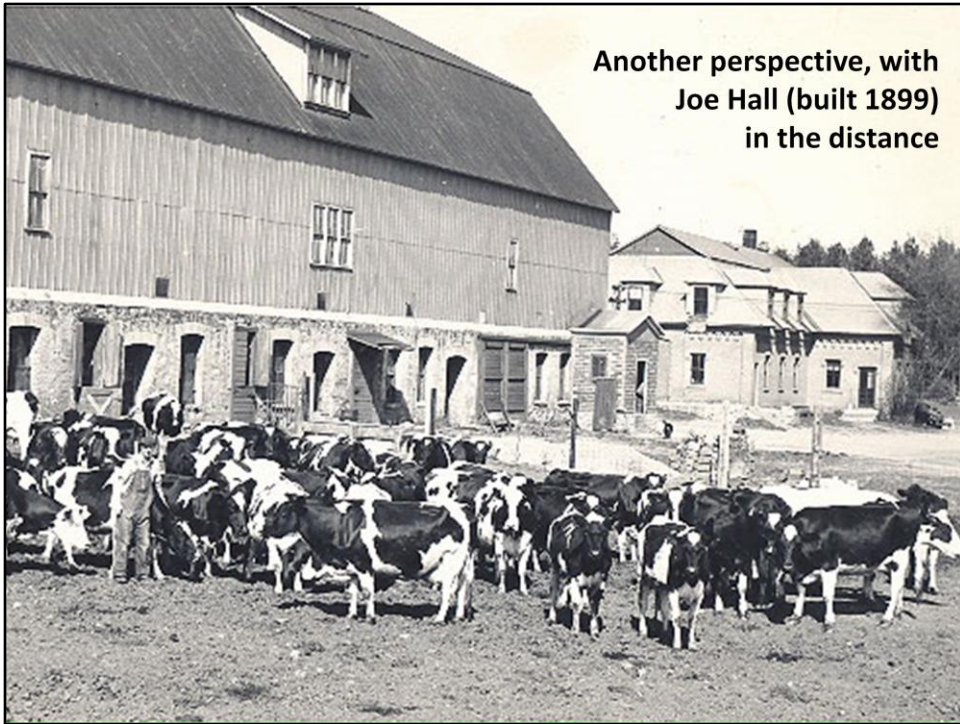
**The barn rebuilt after the tornado; date unknown**



Barn reconstructed after the 1894 tornado

**017 – Unknown. Brick barn after reconstruction from the XXXX. (Ascherman collection caption)**



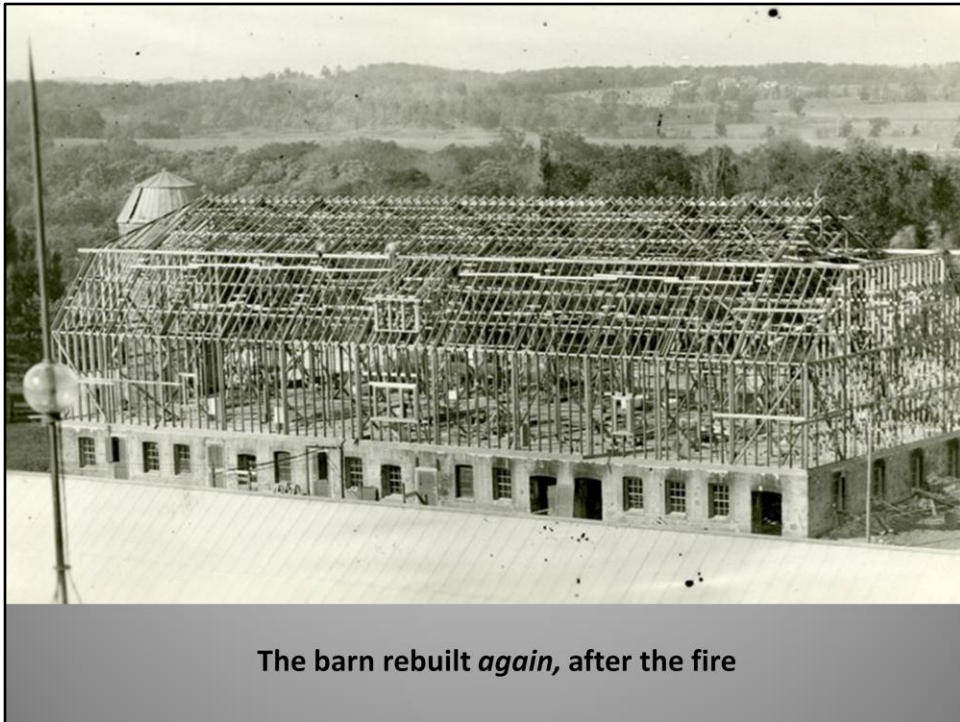


Barn with Joe Hall  
(no date) Joe Hall, in the distance, was built in 1899.



Barn after the 1927 fire

~~020 – June 1894. The 1894 cyclone destroyed the dairy barn and severely damaged several other campus buildings. (Ascheman collection caption)–1927 Dairy barn after the fire of 1927.~~



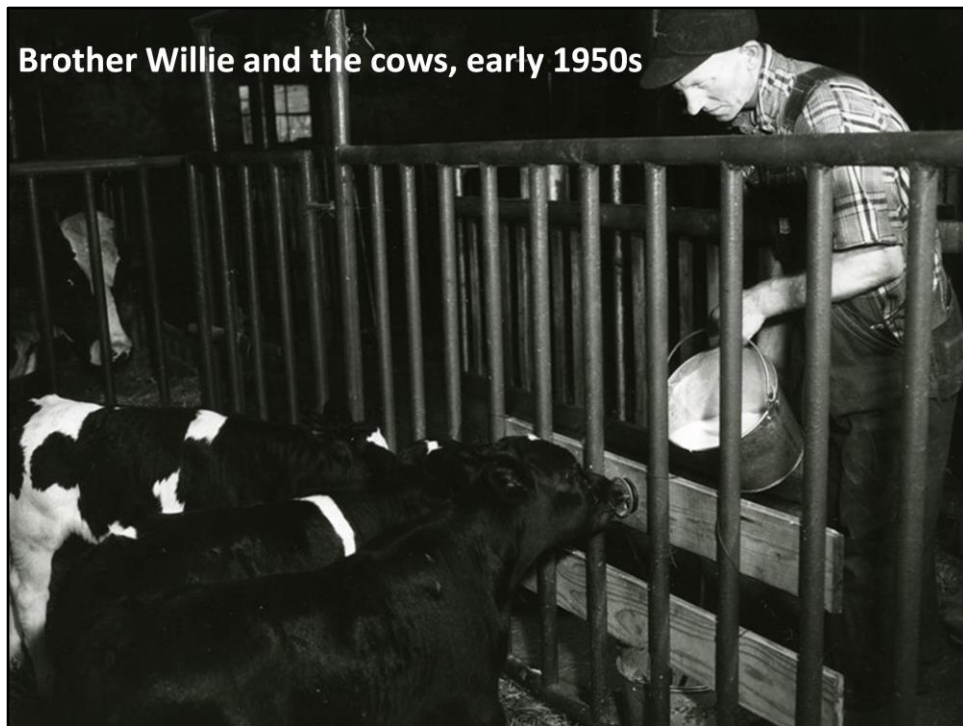
Barn rebuilt again, after the fire

**015 –Unknown.** Here the dairy barn undergoes reconstruction following the ~~ornado of 1894~~ **fire of 1927**. It was located near the present day location of Sexton Commons. The Abbey sustained its dairy herd until 1958. (Ascheman collection caption)



Barns and silo

**019 – 1930s. Barns and silo. Saint John's dairy herd was known for .... (Ascherman collection caption)**



Brother Willie and the cows

**021 – Early 50s. Br. William “Willie” Borgerding feeding dairy herd calves. “Willie” later became a popular night watchman and a source of used furniture for student rooms. The students honored him by giving the Sexton Commons’ pub his name – Brother Willie’s Pub. (Aschman collection caption)**



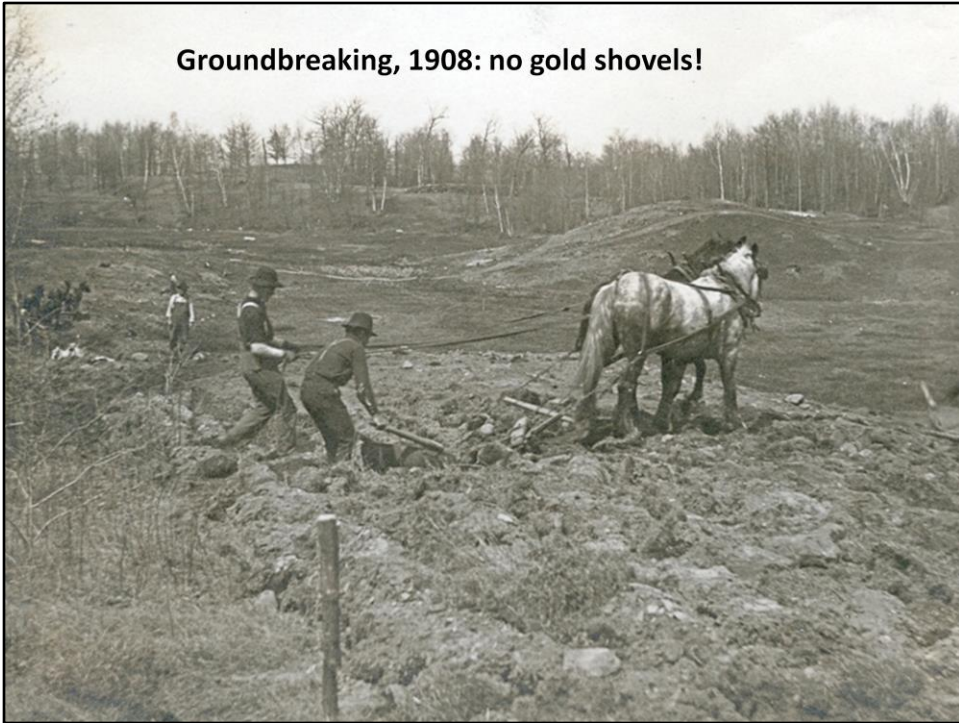
Undated; late 1800s ?



Chickens

**195 – Unknown. Un-identified brother feeding the chickens. (Ascherman collection caption)**

**Groundbreaking, 1908: no gold shovels!**



Groundbreaking, 1908

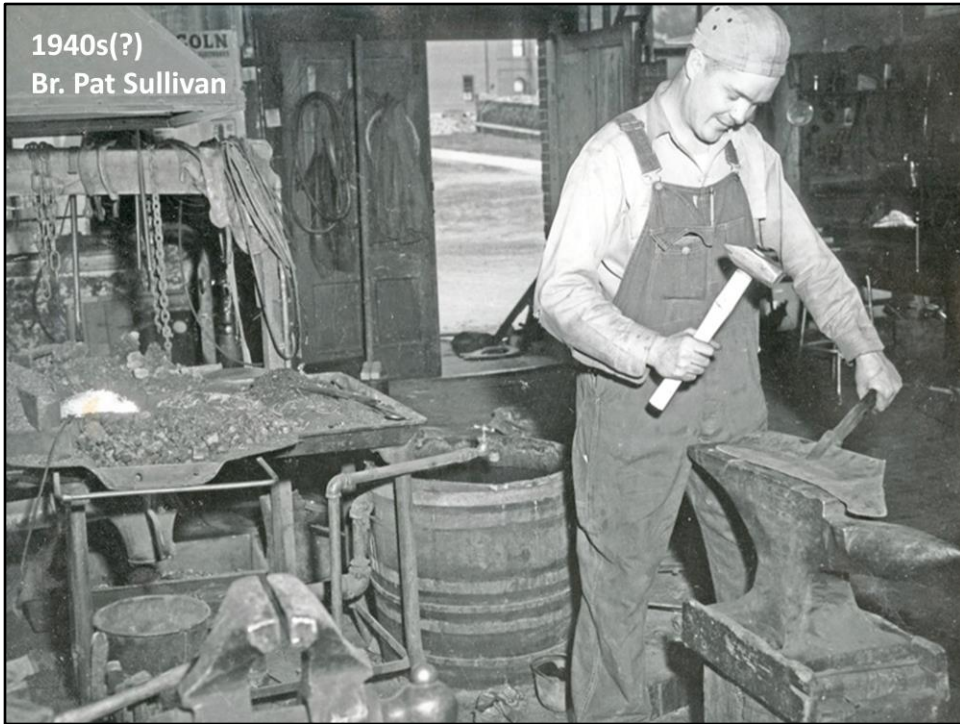
**131 – 1908. An early “ground breaking” at Saint John’s – hard work for both man and beast. Many unmarried lay employees lived in Joe Hall, as a bunkhouse, and married employees oftentimes lived in Flyntown, along Fruit Farm Road. (Ascherman collection caption) *[I think this was really for the football field, which was “constructed” in 1908...]***



Blacksmith shop, ca. 1894: keeping the horses, carts and buggies in working order

Blacksmith shop, ca. 1894

**002 – Circa 1894. Blacksmith Br. Gregory Rosenhammer kept carts and buggies running smoothly. The blacksmith shop occupied the space currently used by Abbey Woodworking, and today the vehicle maintenance shop is on the west edge of campus. (Ascherman collection caption)**



Blacksmith shop, ca. 1940s

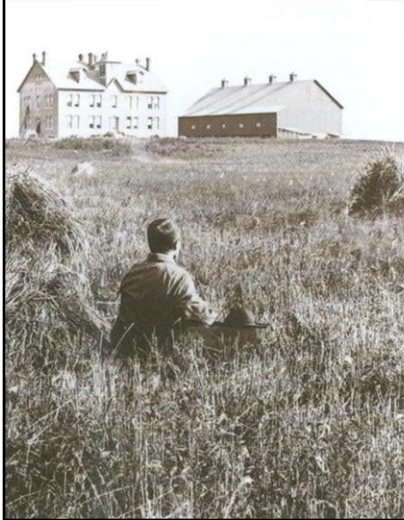
**192 – Unknown. Br. Patrick Sullivan (1921-2005). Having served in the air force, Br. Pat is seen here working in the blacksmith shop. He later served as an electrician, and still later as a general handy man for Benilde-Saint Margaret High School while that school was administrated by Saint John's. (Aschman collection caption)**




## West Union Farm, 1881-1901

## THIS IS THE FARM THE ABBOT BUILT

by M. J. Nelson  
 Appeared originally in the *St. Paul Pioneer Press*,  
 April 29, 1973.  
 Photos by Craig Borck





Cornerstone:  
"St. Alexis Priory  
August 10th, 1882"

*... to build! That is the noblest art  
Longfellow*

**E**ven though he may never follow his brother's work, Abbot Alexis Edelstedt had firmly believed in this idea since his other tempestuous years that Abbot Edelstedt—after his controversial election in 1889 when he was forced to resign—continued the building at St. John's. The first projects completed were the original

monasteries in Europe. He said that when a man joined a monastery, he had a right to security for his last days. If such anti-Catholic movements as the Know Nothings or the Know Nothings were to spring up in Minnesota, Abbot Alexis imagined that his monks would have a refuge in West Union. Thus, despite considerable misgivings among some of the monks, in 1881, a large brick priory (house) was erected on the farm and named St. Alexis Priory.

*St. John's Magazine, spring 1973, p. 7*

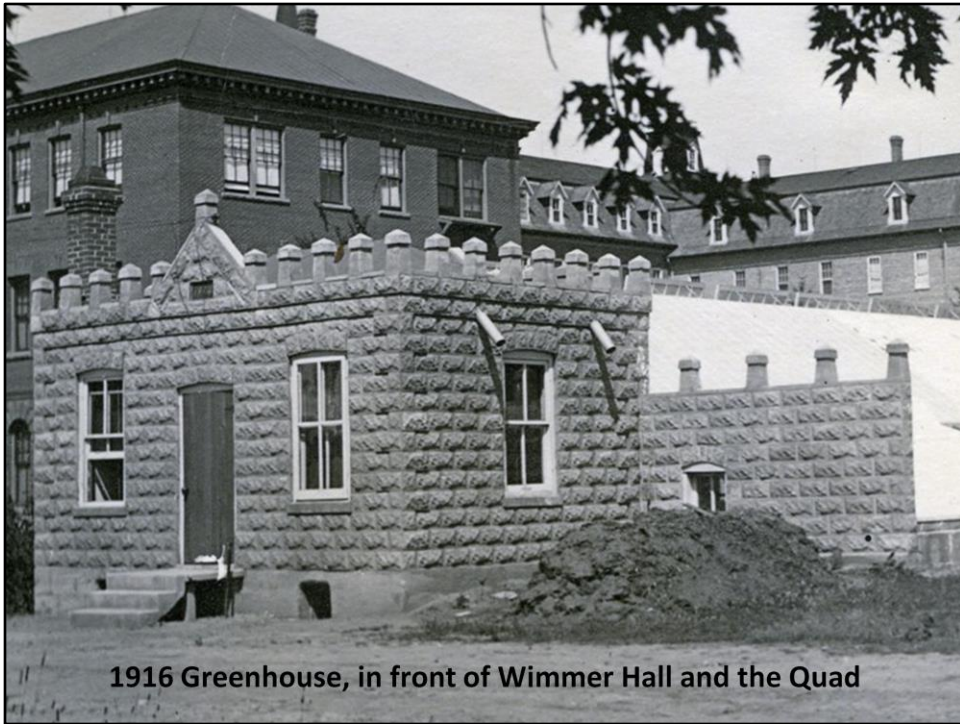
West Union Farm, 1881-1901  
 West Union – “outsourcing” the farm work, 40 miles away





Greenhouse, 1910

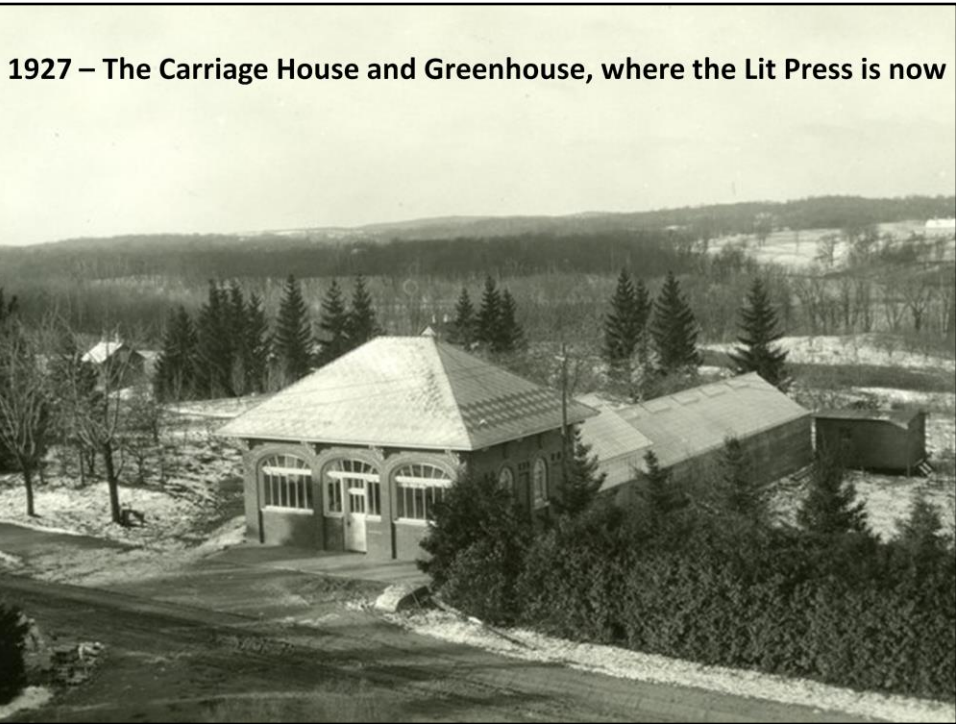
**025 – 1910. Greenhouse. The steeple and cross atop Saint Francis House (then St. Francis convent) can be seen in the background. (Ascherman collection caption)**



1916 Greenhouse, in front of Wimmer Hall and the Quad

Greenhouse, 1916

**026 – 1916. Greenhouse with Wimmer Hall (the original Library) in the left background. (Ascheman collection caption)**



Greenhouse, 1927

**024 – 1927. Exterior of the greenhouse and carriage house – located where The Liturgical Press now stands. (Ascheman collection caption)**



Greenhouse interior

**022 – Unknown. Former greenhouse conservatory located at the present day entrance to The Liturgical Press. (Ascheman collection caption)**





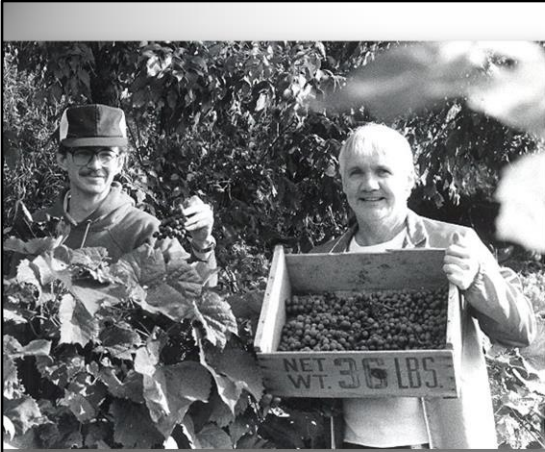
**Monastic garden**



**Br. Leo with cabbage**

Monastic garden; cabbage



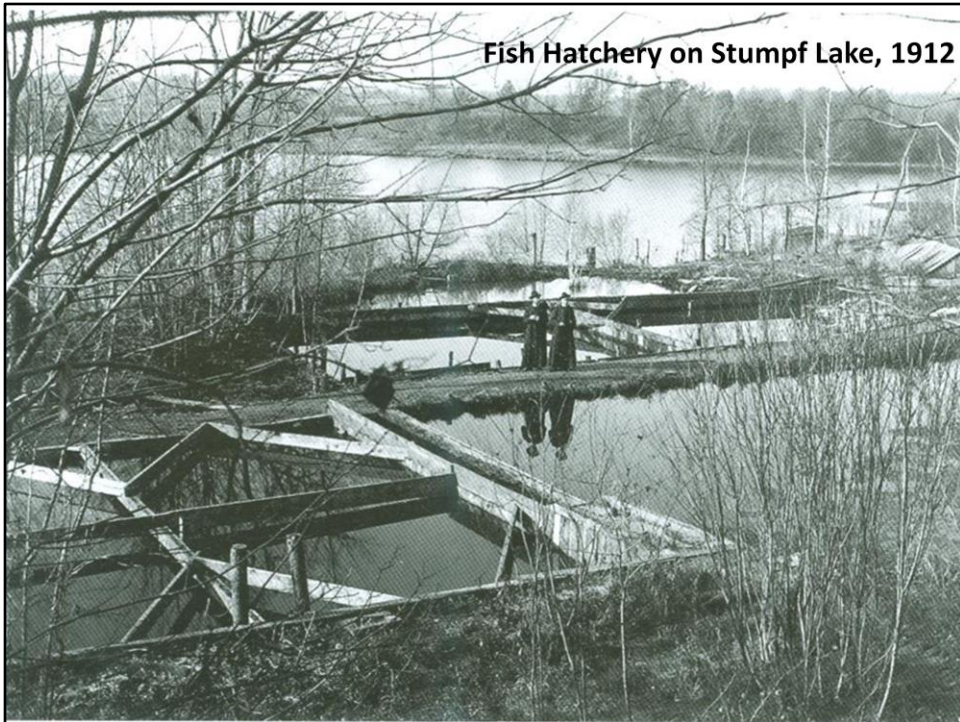


**Br. Dietrich and Br. Sean with grapes**



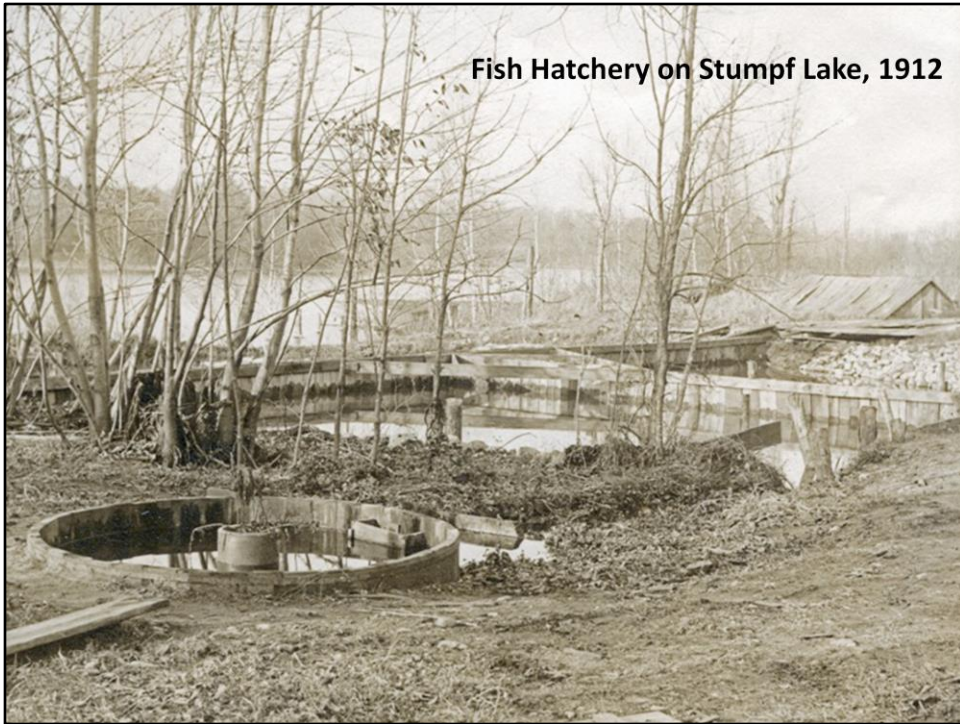
**Picking apples in the Abbey orchard**

Grapes and apples



Fish Hatchery on Stumpf Lake

**151 – 1912. Fish Hatchery on Stumpf Lake. From their arrival, the monks of Saint John's Abbey have remained committed to the precious plant and animal life in the surrounding woodland and lakes. The fish hatchery was established in 1905 on the eastern bank of the Watab. (Ascherman collection caption)**



Fish Hatchery on Stumpf Lake, 1912

Fish Hatchery on Stumpf Lake

**152 – 1912. Fish Hatchery on Stumpf Lake. From their arrival, the monks of Saint John's Abbey have remained committed to the precious plant and animal life in the surrounding woodland and lakes. The fish hatchery was established in 1905 on the eastern bank of the Watab. (Ascherman collection caption)**

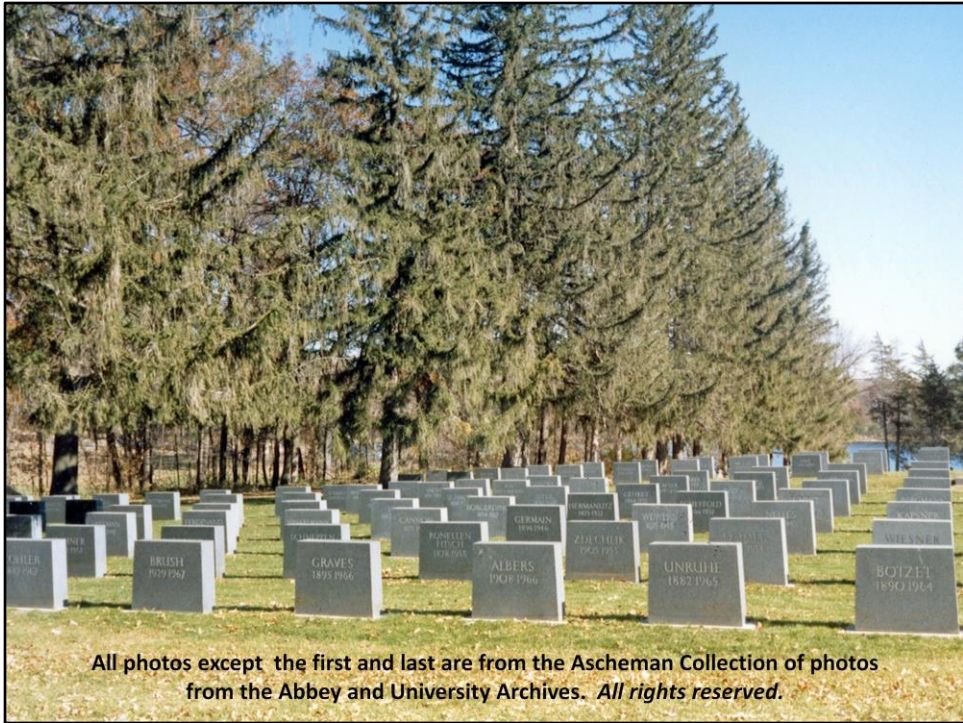


1992: “Reduce, *Reuse*, Recycle”



Re-using Joe Hall

**112 – 1992. Saint Joseph Hall moving west to make room for Sexton Commons, already under construction in lower left. Originally a carriage house, “Joe Hall” later served as a bunk house for lay workers, still later as graduate student housing, and presently as undergraduate housing. (Aschman collection caption)**



All photos except the first and last are from the Ascheman Collection of photos from the Abbey and University Archives. *All rights reserved.*

St. John's cemetery: Dust to dust