

College of Saint Benedict and Saint John's University

DigitalCommons@CSB/SJU

Celebrating Scholarship and Creativity Day

Undergraduate Research

4-25-2019

Water Shut Off Locations at the College of Saint Benedict

Samuel Wetzel

College of Saint Benedict/Saint John's University, snwetzel@csbsju.edu

Follow this and additional works at: https://digitalcommons.csbsju.edu/ur_cscday

Recommended Citation

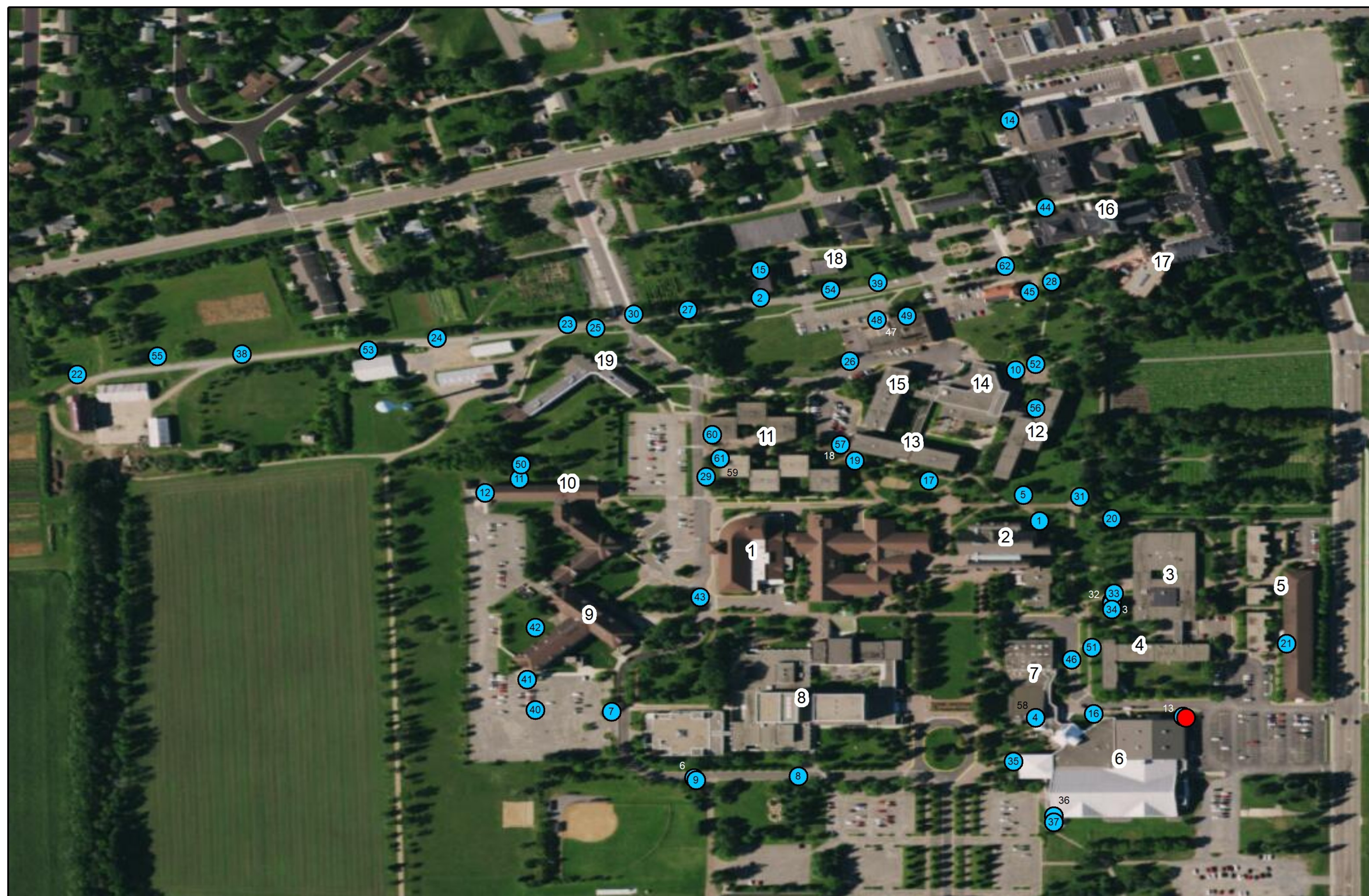
Wetzel, Samuel, "Water Shut Off Locations at the College of Saint Benedict" (2019). *Celebrating Scholarship and Creativity Day*. 58.

https://digitalcommons.csbsju.edu/ur_cscday/58

This Poster is brought to you for free and open access by DigitalCommons@CSB/SJU. It has been accepted for inclusion in Celebrating Scholarship and Creativity Day by an authorized administrator of DigitalCommons@CSB/SJU. For more information, please contact digitalcommons@csbsju.edu.

Water Shut Off Locations at the College of Saint Benedict



By Sam Wetzel



Water Shut Off Locations

- | | |
|------------------------------------|---------------------------------|
| 1 - Ardolf Science Center | 2 - Artisan CWA |
| 3 - Academic Services Building | 4 - Aurora Loop |
| 5 - Aurora South Loop | 6 - BAC Building |
| 7 - BAC Dead End West Side | 8 - BAC Sprinkler |
| 9 - Ball Field/Tennis Court | 10 - Bookstore/Mary Hall |
| 11 - Brian Hall Loop | 12 - Brian Hall Building |
| 13 - City Loop East End | 14 - City Loop North End |
| 15 - CWA Main | 16 - Claire Lynch Hall Loop |
| 17 - Clemens Library | 18 - Corona Hall Building |
| 19 - Corona Hall Sprinkler | 20 - East Apt. Loop |
| 21 - East Apts. Luetmer Sprinkler | 22 - Milk Barn |
| 23 - Convent Garden East | 24 - Convent Garden West |
| 25 - Evin Hall | 26 - Evin Hall Soft |
| 27 - Farm Loop (Water Tower) | 28 - Fish Pond/Irrigation |
| 29 - Gorecki Dining/Sprinkler | 30 - Grape Vineyard |
| 31 - Grotto | 32 - HAB Building Soft & Hard |
| 33 - HAB Sprinkler | 34 - HAB/Old Loft Dead End |
| 35 - HCC Fieldhouse West Loop | 36 - HCC Fieldhouse S. Loop |
| 37 - HCC Fieldhouse Irrigation | 38 - Hermitage House Loop |
| 39 - Heritage Museum Dead Loop | 40 - Lottie Hall Building |
| 41 - Lottie Hall Loop | 42 - Lottie Hall Sprinkler |
| 43 - Margretta Hall | 44 - Marmion Hall |
| 45 - Monastery Loop | 46 - Murray Hall Soft & Hard |
| 47 - Power Plant West Well | 48 - Power Plant South Well |
| 49 - Power Plant West Entry | 50 - Power Plant/Evin Loop |
| 51 - Richarda Hall Soft and Hard | 52 - Regina Hall Sprinkler |
| 53 - St. Joseph Shop South Hydrant | 54 - St. Wendelin's CWA |
| 55 - Monastery Trailer | 56 - Water Tower |
| 57 - West Apts. North Building | 58 - West Apts. South Building |
| 59 - West Apts. South Sprinkler | 60 - West Apts. North Sprinkler |
| 61 - West Apts./Evin Hall Loop | 62 - Potato Porch (Tunnel) |



-  8" Cross Connect to City
-  Water Shut Off Locations

- | | | | | |
|-------------------------------|---------------------------|---|--------------------------|------------------------------------|
| 1 - Gorecki Cener | 5 - East Apartments | 9 - Lottie and Frank J. Ardolf Jr. Hall | 13 - Corona Hall | 17 - Main Building |
| 2 - Ardolf Science Center | 6 - Haehn Campus Center | 10 - Brian Hall | 14 - Mary Hall Commons | 18 - Saint Wendelin Hall |
| 3 - Henrita Academic Building | 7 - Murray Hall and Pool | 11 - West Apartments | 15 - Regina Hall | 19 - Evin Hall/Spirituality Center |
| 4 - Richarda Hall | 8 - Benedicta Arts Center | 12 - Aurora Hall | 16 - Sacred Heart Chapel | |

This project was undertaken by the request of Terrance Loso, who works at the power plant at the College of Saint Benedict. He requested that a map of all the water shut off locations on campus be made so that they were easier to find in the case that the water in a certain area needed to be shut off. He also requested that each water shut off location be labeled so it could be determined which water shut off location controls which part of the water main. Furthermore, Mr. Loso requested that the connection to the city water main be added, as the College of Saint Benedict occasionally needs extra water from the city. To make this map, I took the GPS coordinates of all the water shut off locations that Mr. Loso gave me and converted them from degrees minutes seconds format to decimal degree format. Then, I overlaid these points over a satellite image of the College of Saint Benedict. Next, I labeled the major buildings on campus to provide a reference for the location of the water shut offs. Lastly, I labeled each water shut off location according to what area or building they correspond to, as can be seen by the legend to the right of the map.