

College of Saint Benedict and Saint John's University

DigitalCommons@CSB/SJU

Archives History Lessons

Archives

2014

Saint Benedict's Teresa Hall at 100

Peggy L. Roske

College of Saint Benedict/Saint John's University, proske@csbsju.edu

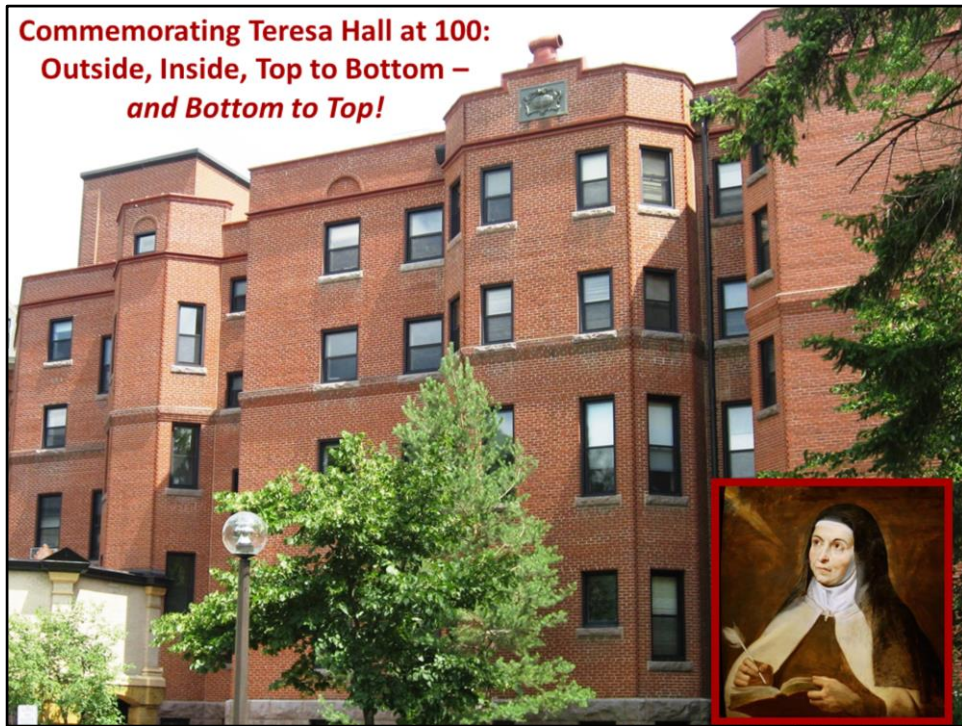
Follow this and additional works at: https://digitalcommons.csbsju.edu/archives_history_lessons

Recommended Citation

Roske, Peggy L., "Saint Benedict's Teresa Hall at 100" (2014). *Archives History Lessons*. 50.

https://digitalcommons.csbsju.edu/archives_history_lessons/50

This Presentation is brought to you for free and open access by DigitalCommons@CSB/SJU. It has been accepted for inclusion in Archives History Lessons by an authorized administrator of DigitalCommons@CSB/SJU. For more information, please contact digitalcommons@csbsju.edu.



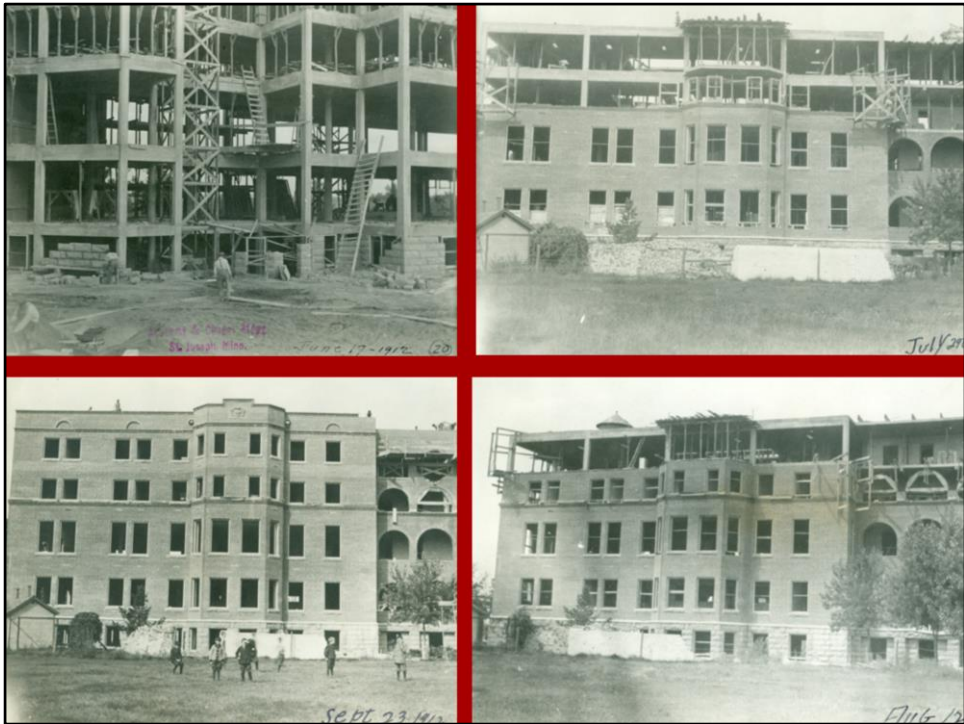
Saint Teresa of Ávila also called Saint Teresa of Jesus by [Peter Paul Rubens](http://en.wikipedia.org/wiki/File:Peter_Paul_Rubens_138.jpg) (1577–1640) http://en.wikipedia.org/wiki/File:Peter_Paul_Rubens_138.jpg
Building photo by the archivist.

**The new college building, St. Teresa's Hall,
was completed and opened for classes in
the fall of 1913.**





The earliest photos in the St. Ben's Monastery Archives show the building already well underway



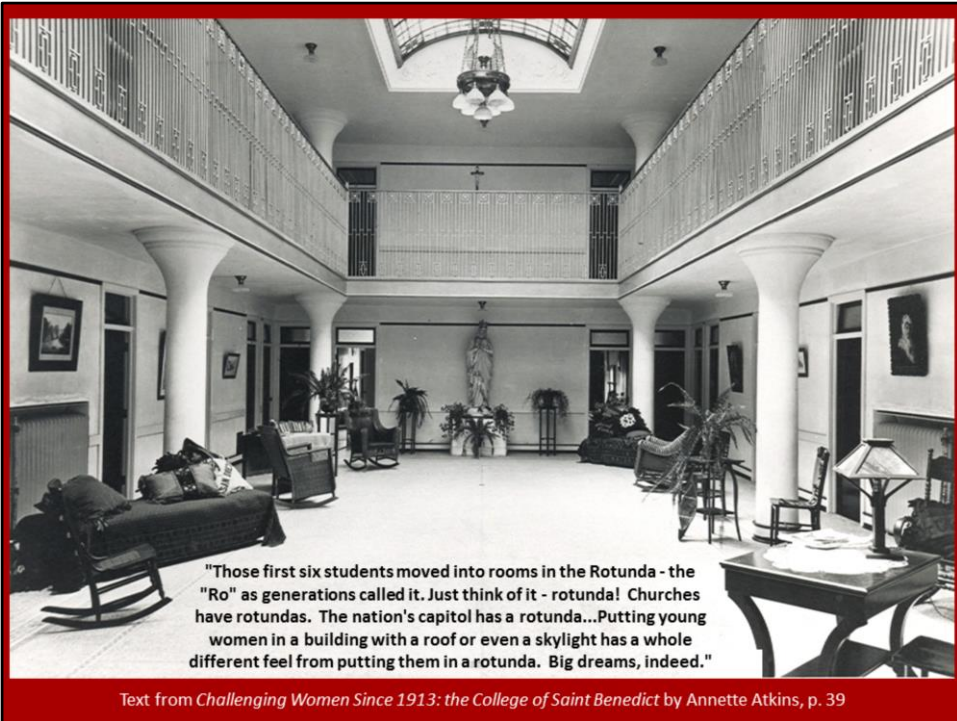
1912: June – July – August – September progression



The Rotunda (Teresa Hall's 3rd and 4th floors) under construction. The door highlighted is currently the office of Parker Wheatley, chair of the Economics department, Main 335.

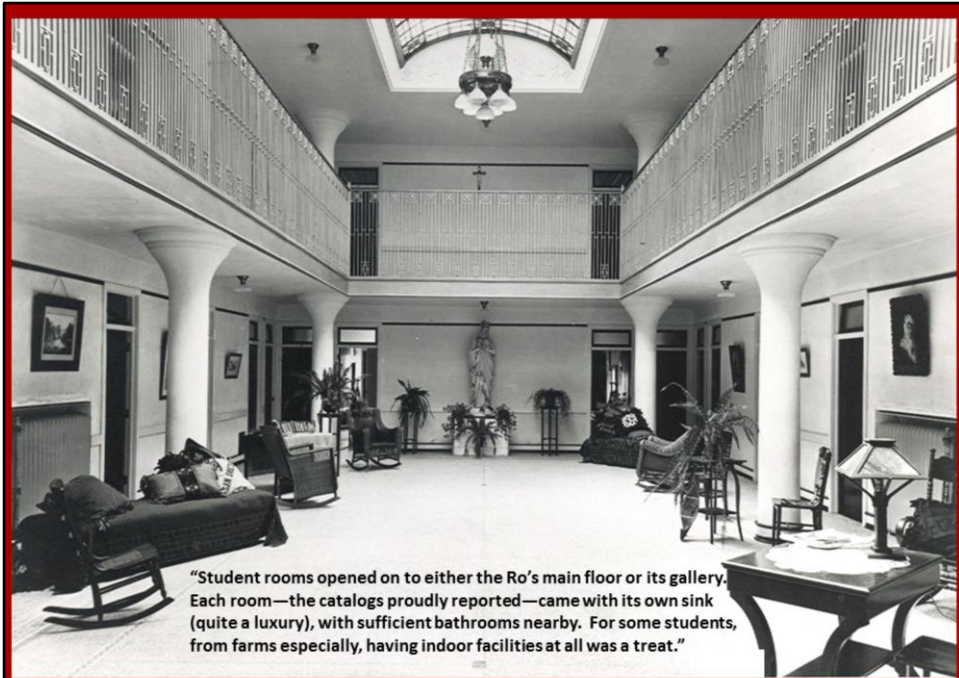


The Rotunda (Teresa Hall's 3rd and 4th floors) under construction



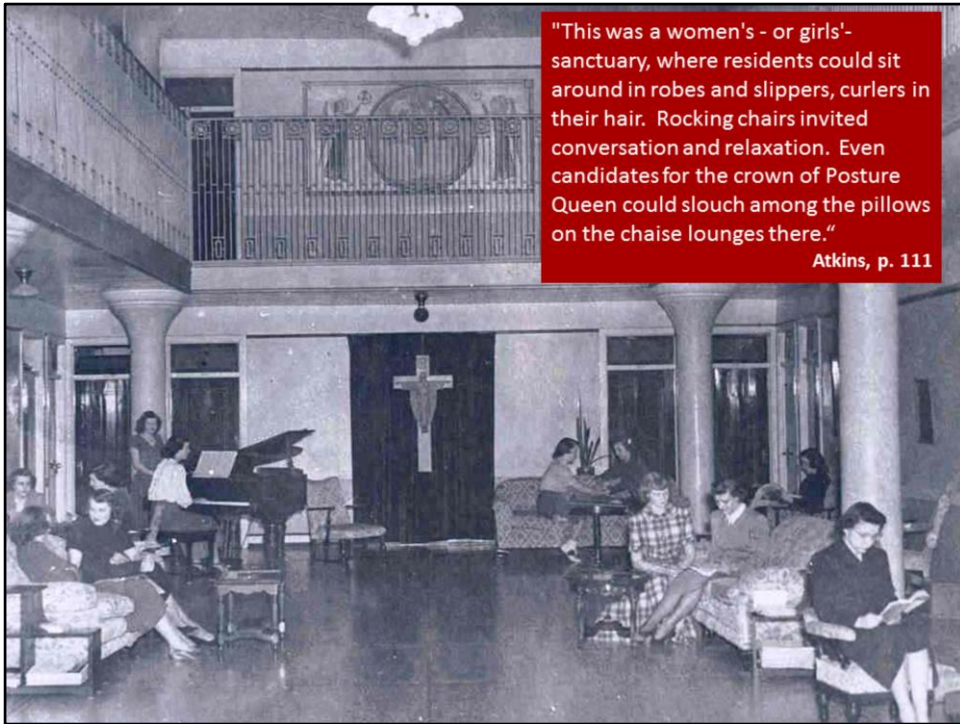
"Those first six students moved into rooms in the Rotunda - the "Ro" as generations called it. Just think of it - rotunda! Churches have rotundas. The nation's capitol has a rotunda...Putting young women in a building with a roof or even a skylight has a whole different feel from putting them in a rotunda. Big dreams, indeed."

Text from *Challenging Women Since 1913: the College of Saint Benedict* by Annette Atkins, p. 39



“Student rooms opened on to either the Ro’s main floor or its gallery. Each room—the catalogs proudly reported—came with its own sink (quite a luxury), with sufficient bathrooms nearby. For some students, from farms especially, having indoor facilities at all was a treat.”

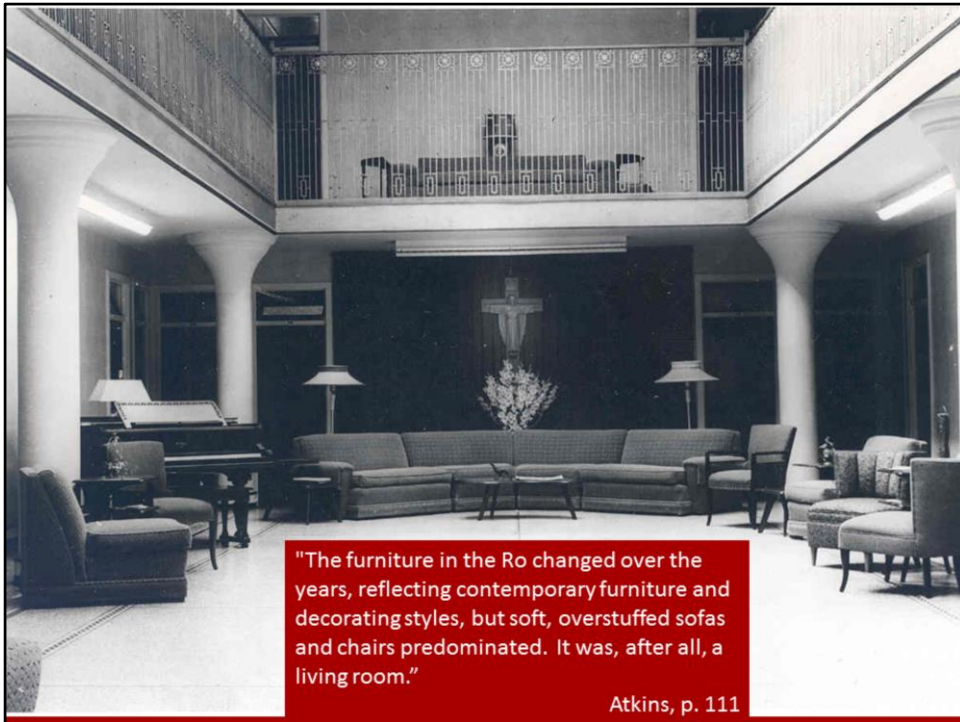
Text from Challenging Women Since 1913: the College of Saint Benedict by Annette Atkins, p. 39



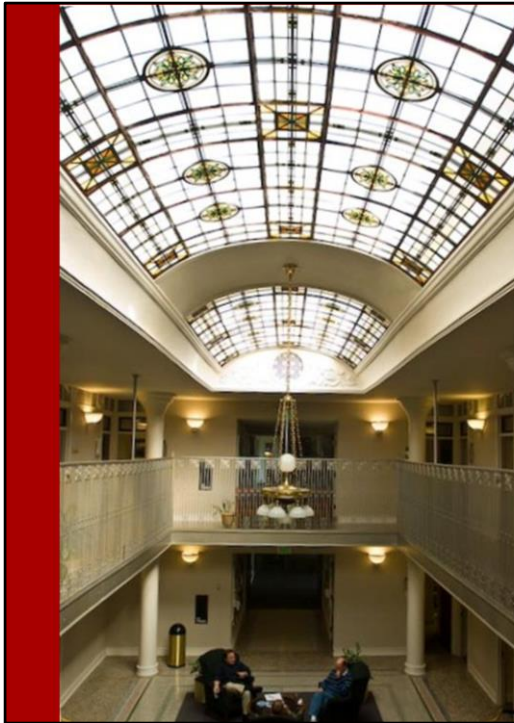
"This was a women's - or girls'- sanctuary, where residents could sit around in robes and slippers, curlers in their hair. Rocking chairs invited conversation and relaxation. Even candidates for the crown of Posture Queen could slouch among the pillows on the chaise lounges there."

Atkins, p. 111

Text from *Challenging Women Since 1913: the College of Saint Benedict* by Annette Atkins, p. 111



Text from *Challenging Women Since 1913: the College of Saint Benedict* by Annette Atkins, p. 111



The Preservation Alliance of Minnesota gave CSB an award in 1992 for "preserving the historic resources of the state," because administrators "had the foresight and values to protect this historic building."

Saint Benedict's Today,
Winter 1992, p. 8

Photo by Steve Voit for CSB, used for

<http://cdm.csbsju.edu/cdm/ref/collection/CSBArchives/id/5078> Fall 1994 *Saint Benedict's Today* p. 17

<http://cdm.csbsju.edu/cdm/ref/collection/CSBArchives/id/4891> 1992 Winter *Saint Benedict's Today* p. 8



ca. 1920

A room in the Ro



ca. 1950?



2nd floor - the Auditorium - under construction



The Auditorium, ca. 1920



2nd floor – formerly the Auditorium – in 2014

2014 photo by the archivist



1st floor
under
construction

Apr 11 1913 Museum Academy Bldg



Teresa Hall in *Architecture Minnesota* Sept-Oct 1991 p.31



1st floor:
To the left (northwest) was the Art room

Fireplace →



Some art students gathered after class for an informal discussion of art problems . . . Mary Glatzel, Anna Lou Ellenbecker, Patricia Mayer, Sally Lloyd, Marianne Tyrrell, Cecilia Ganley, Eileen Shea, Joanne Heaton, Mary Jane Lang, Ruth Nierengarten, Rosemary Boyle, and Helen Diemert.



The former Art room,
ca. late 1970s



The Art room ca.
1990 – now the
Alumnae Lounge



1st floor:
To the right
(southeast) was
the Sewing Room



The Sewing Room



The Sewing room, ca. 1990 – now the TRC Board Room

"The library was one of the showpieces of the new Teresa Hall in 1913. The wood paneling made the area welcoming. The built-in bookcases gave it permanence and substance. Big windows let in good reading light and stained glass hinted that this was sacred space. Small sofas invited readers to sit down and stay. Fireplaces with surrounds of hand-painted tiles warmed the space."
Atkins, p. 167



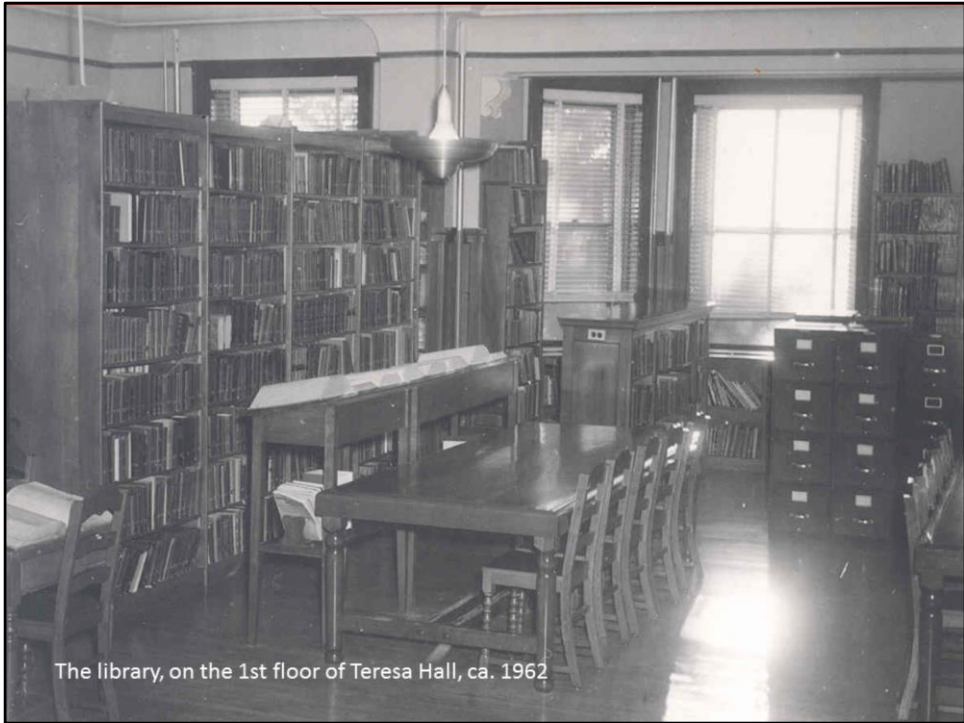
The library, 1st floor of Teresa Hall, ca. 1920



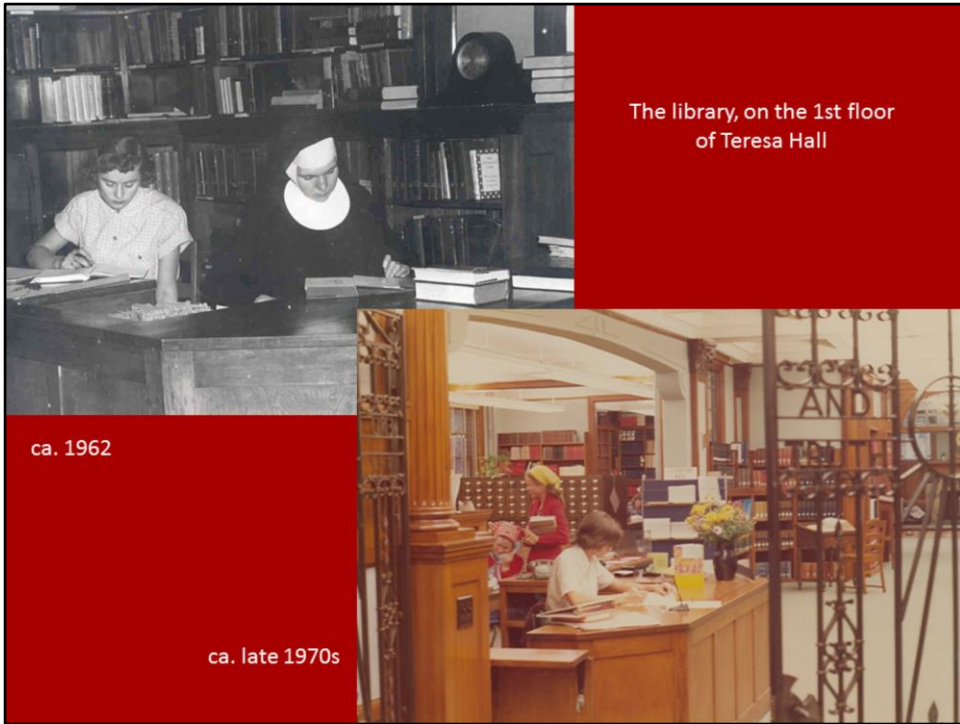
The former library, now the
Teresa Reception Center (TRC)
ca. 1990



The south fireplace, then and now



Ca. 1962?



Bonnie Kalla, long-time library employee, staffs the desk in this 1970s photo from the CSB Archives.

The basement was the gymnasium





"Perhaps the ceiling was a little low and the space a bit awkward, but it offered a place where students would be able to exercise and play and dance and stretch. It was more than enough for its day and more than many colleges - especially coed ones - offered for women."

Atkins, Challenging Women Since 1913, p. 41





Basketball—
in dresses or in
“bloomers” — had to be
played around the pillars

"By 1962, the library was bursting...
Students had long given up actually
studying in the library...

By relocating the gym, the college could
nearly double the size of the library."

Atkins, p. 167



"The students still wouldn't
have enough study space,
but the books would be
accessible, and there was
room to expand the
collections."

Atkins, p. 167







"The college enlisted the help of the sisters to move the books. Like a line of firefighters, they passed the books from shelf to sister to sister, out the window, down the ladder, through the window, down the ladder, from sister to sister to shelf.

The work took dozens of sisters only a few days."

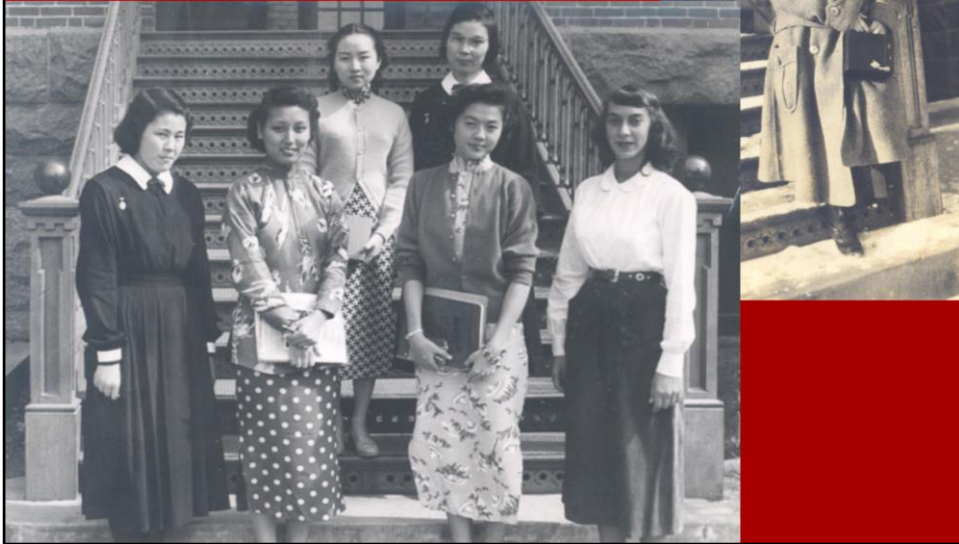
Atkins, p. 167



“The Knuckle” – stairs and porches between Gertrude Hall and Teresa Hall. Teresa Hall’s first (main) floor was on the same level as Gertrude Hall’s, but the other floors were each a little lower. Thus a major problem in the 1990 renovation was the installation of an elevator, built inside next to Gertrude, that had to have doors on two sides and open on 10 different levels.

"You were supposed to ascend into a temple of learning,
so you had to climb a steep flight of stairs
to get to the front door."

Architecture Minnesota Sept-Oct. 1991, p. 31



Quote from Pat Widdick, GLTA Architects, *Architecture Minnesota* Sept-Oct. 1991, p. 31

The Teresa Hall entrance stairs were frequently the location of group photos.

Teresa Hall undergoes facelift

by Maiya Soriya

The long awaited restoration and renovation of Teresa Hall is well underway with the promise of modernization, while the charm and history of the building remain preserved.

Gary Berg, Assistant to the President in charge of Planning, described the changes to Teresa as occurring in phases.

Phase one is the current stage which includes the renovation of the third and fourth floors, previously residential areas, into faculty offices. This area and its original doors and hardware have been restored with the additions of new ceilings, lights, windowsills, paint, and carpet.

A conference/seminar room now fills part of the back end of the rotunda where two dorm rooms once existed. New electrical and mechanical systems, computer equipment, bathrooms, and a fire exit are also being installed.

Second floor faculty offices will be transformed into business offices and room renovations in the Main Building will change some offices to classrooms.

Berg said that Phase two includes

the renovation of the first floor and is more of a restoration and clean-up in order to preserve that area. The fireplaces will be functioning and a room will be used for meetings, lounge space and special events. The basement will be used for mechanical space for the new air conditioning and plumbing systems as well as providing space for computer closets.

Renovation of the first floor will include offices, space for housekeeping, a new physical plant, public information offices, a workroom, duplicating services, and space for special events.

Final stages of Phase two will include the widening of halls and spaces which are now congested with traffic flow. Plans call for a spacious, naturally lit lobby for students and guests.

The major task of Phase two will be the creation of a convenient and attractive main entrance on the south side of the building. Berg said that these plans will be made with consent from the convent. The entrance will include a new elevator which enters at ground level to make the building handicap accessible.

Complications of these plans include the fact that St. Gertrude (the Main Building) is on a slightly higher

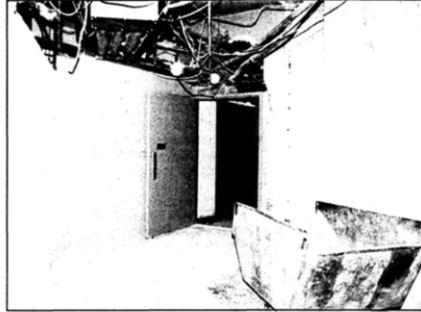


photo by Brenda Schindler

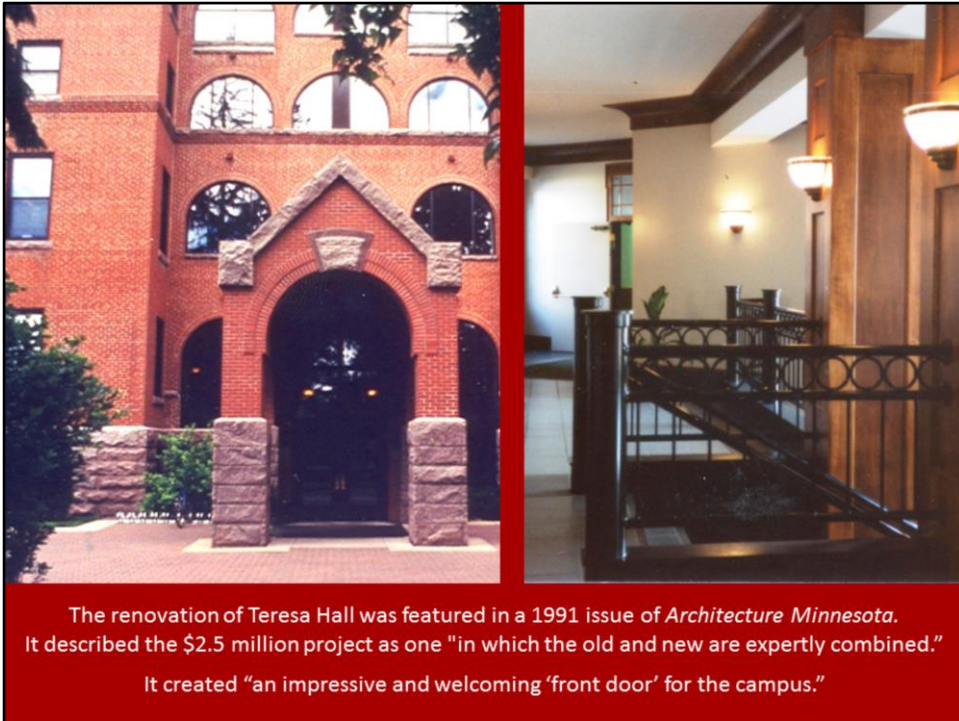
level than Teresa Hall and therefore the elevator must be made to accommodate both levels.

Other complications include working around students and faculty. Therefore, the major floor moving will be done during January Term when there is less student traffic and will minimize problems.

The actual completion of the project has not yet been dated. Berg said that Phase one is the quick phase, but the second phase will take more time.

Berg stated that the changes made in Teresa Hall would basically increase its functional use, safety and accessibility for the handicapped.

Soriya, Maiya. "[Teresa Hall undergoes facelift](#)," *The Independent*, September 27, 1988.



The renovation of Teresa Hall was featured in a 1991 issue of *Architecture Minnesota*. It described the \$2.5 million project as one "in which the old and new are expertly combined." It created "an impressive and welcoming 'front door' for the campus."

Text from <http://cdm.csbsju.edu/cdm/ref/collection/CSBArchives/id/5078> Fall 1994
Saint Benedict's Today p. 17
Interior photo and last sentence from
<http://cdm.csbsju.edu/cdm/ref/collection/CSBArchives/id/4891> 1992 Winter *Saint Benedict's Today* p. 8



The Teresa Reception Center's bookshelves looked bare after the move to Clemens Library, so books withdrawn from the collection were gradually returned to Teresa to add ambience and character to the space.

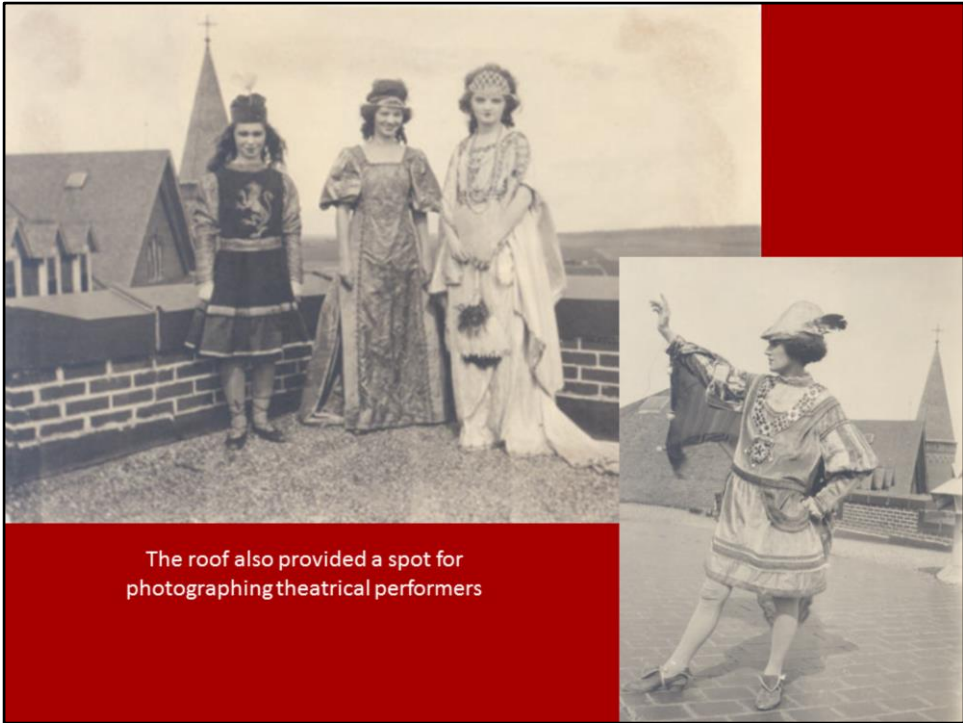


Teresa Hall roof under construction

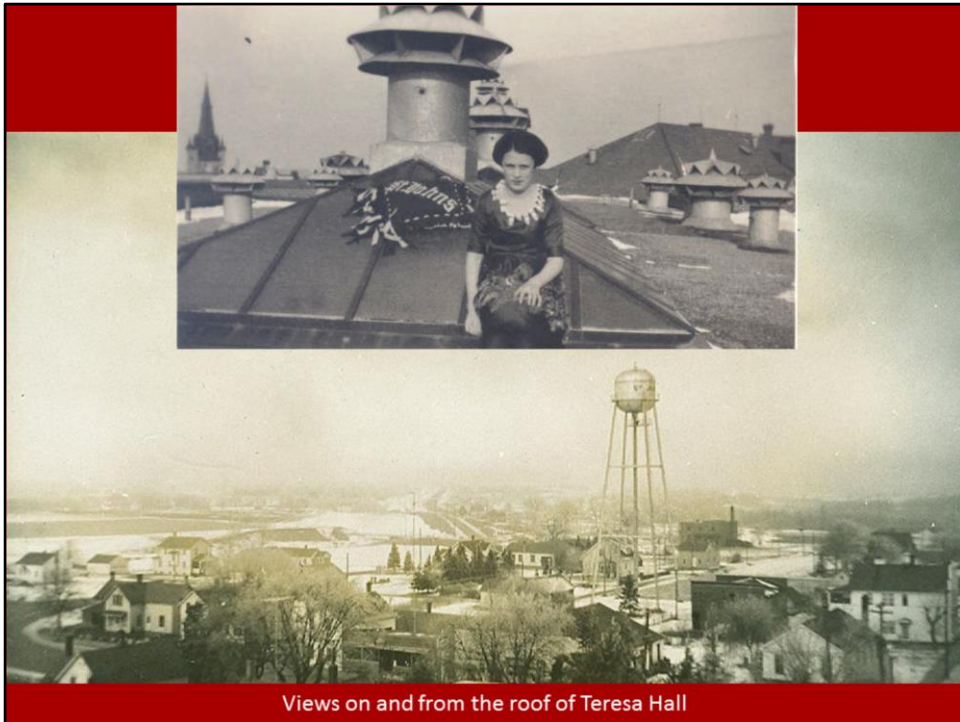


The roof was the highest vantage point for viewing the annual Pageant





The roof also provided a spot for photographing theatrical performers



Views on and from the roof of Teresa Hall

ca. 1920?

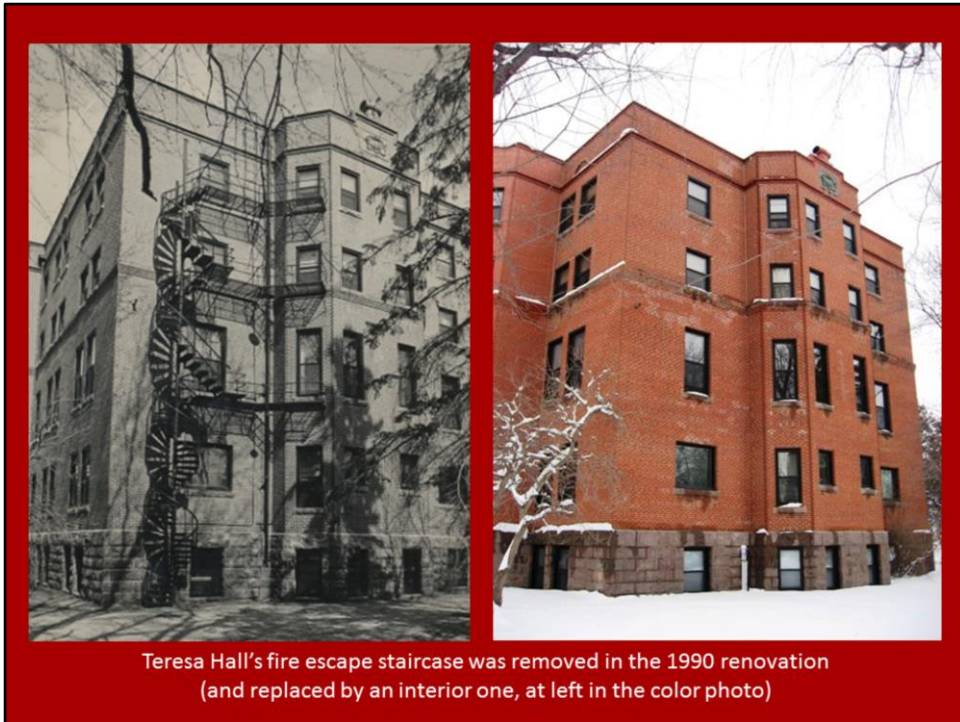
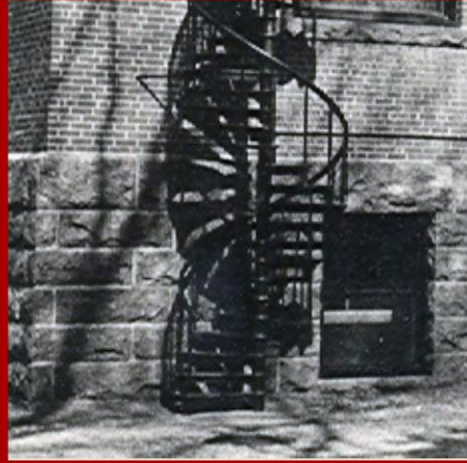


Photo on right by the Archivist, 2007



...but it, too, had been a favorite place to pose



It was also a tempting way for students to get back into the Ro (via the third floor community kitchen room) after hours!



Compiled in April 2014 from resources in the archives of
Saint Benedict's Monastery and the College of Saint Benedict
by Peggy Landwehr Roske, CSB/SJU Archivist.
Photos are from the Monastery Archives except where noted.
All rights reserved.

<http://cdm.csbsju.edu/cdm/ref/collection/CSBArchives/id/2522>