

College of Saint Benedict and Saint John's University

DigitalCommons@CSB/SJU

Archives History Lessons

Archives

2010

Residential Life at St. John's in 1920

Peggy L. Roske

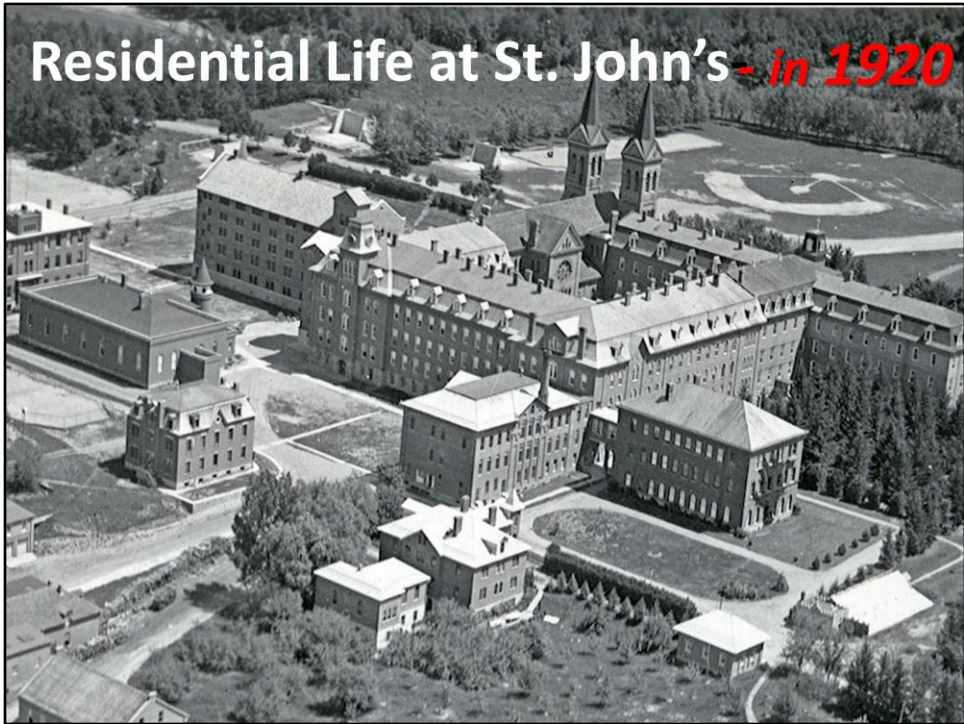
College of Saint Benedict/Saint John's University, proske@csbsju.edu

Follow this and additional works at: https://digitalcommons.csbsju.edu/archives_history_lessons

Recommended Citation

Roske, Peggy L., "Residential Life at St. John's in 1920" (2010). *Archives History Lessons*. 57.
https://digitalcommons.csbsju.edu/archives_history_lessons/57

This Presentation is brought to you for free and open access by DigitalCommons@CSB/SJU. It has been accepted for inclusion in Archives History Lessons by an authorized administrator of DigitalCommons@CSB/SJU. For more information, please contact digitalcommons@csbsju.edu.



Residential Life at St. John's – in 1920

Rules of Discipline

General Rules

DISCIPLINE is essential to the good order of any community. It is very necessary for the proper spirit in the student body that all students take the right attitude toward the rules of discipline.

Rules are made not for their own sake, but for the welfare and happiness of all concerned.

All should regard the rules, therefore, as instruments of happiness, not of tyranny and torture.

Rules of Discipline – General Rules

The following rules of discipline apply to all:

1. All students must attend the daily Mass. Catholic students must receive Holy Communion at least once a month.
2. Silence must be observed at all times in the toilets and dormitories. Except during recreation, silence is to be observed in the study halls.



Image from the 1921-22 *Sagatagan*, p. 13

Mass / Silence

4. Running and boisterous behavior within the buildings are at all times prohibited. ...
Anyone molesting passing automobile parties will be severely punished.
5. Students injuring any property of the Institution must pay for the damage.
6. ...Association between students of the Junior Hall and others, and between Seminarians and other students, is forbidden.

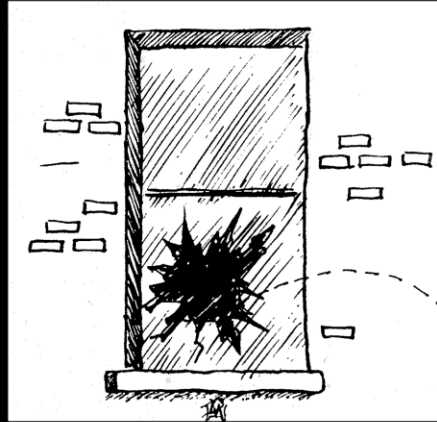


Image from the 1919 *Sagatagan*, p. 106

Boisterousness/damage/associations



7. Students are not allowed to leave the assigned University grounds without the permission of the Rector....

Riding off the grounds in an automobile or any other conveyance, without permission, will subject the offender to the danger of expulsion.

If anyone absents himself from the dormitory at night to leave the premises, he will be summarily dismissed.

Image from *The Record* Feb. 1, 1920, p. 74 <http://cdm.csbsju.edu/ui/?CSBArchNews,21303>

Leaving the premises

8. The use of tobacco is prohibited.

Students above the age of eighteen, however, will be permitted to smoke under certain restrictions, provided they can present a written permit from their parents.

Smoking in the building will be severely punished.

Cigarettes, snuff and chewing tobacco are absolutely prohibited.



Image from the 1920 *Sagatagan*, p. 10

Smoking

When We Get
Our Aeroplanes:

Chasing Smokers
will be the
Prefects' Diversion—
as usual!!



Image from the 1920 *Sagatagan*, p. 99

Chasing smokers cartoon



9. All incoming as well as outgoing mail is subject to the inspection of the authorities. All letters, therefore, shall be mailed unsealed.

All objectionable printed matter will be confiscated.

Before placing a subscription for a magazine, inquire of the Rector whether it is on the approved list.

Image from *The Record* Nov. 1920 p. 467 <http://cdm.csbsju.edu/u/?/CSBArchNews,21684>

Mail

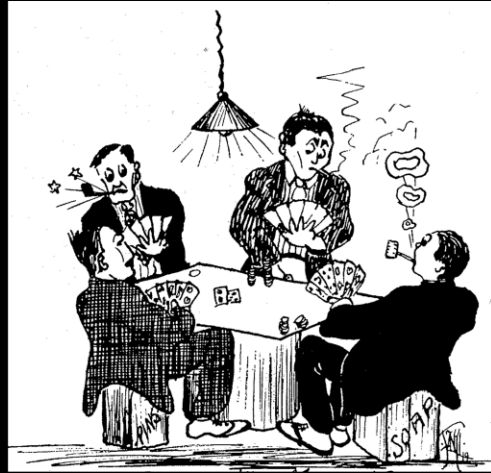
10. Gambling is strictly prohibited.

Students are forbidden to raffle and to bet money or valuable articles.

No student shall open an agency of any kind without the permission of the Rector.

???

Image from the 1919 *Sagatagan*, p. 90



Gambling

11. The time for reading newspapers and magazines received through the mail is restricted to Wednesday and Saturday afternoons and Sundays from 11:15 a.m. to 12 p.m.

Story books may be read only during these periods and during the evening study hour.

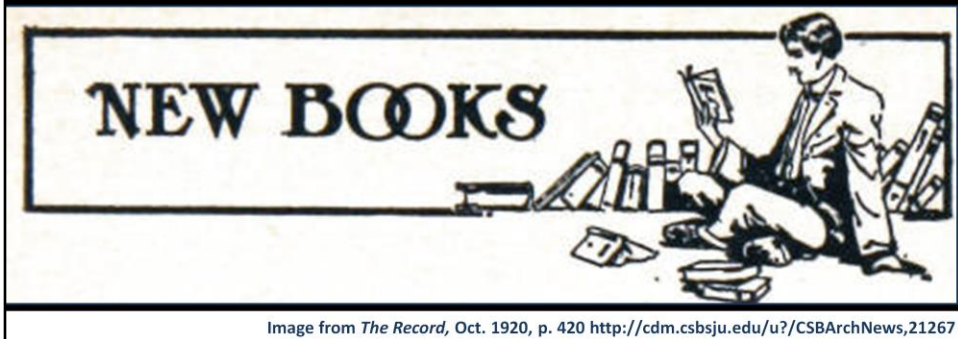


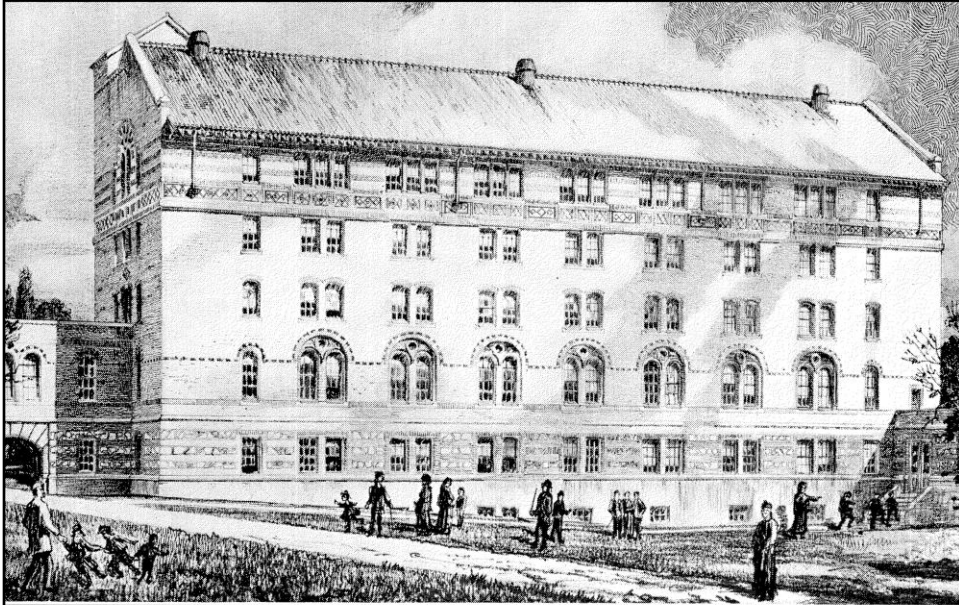
Image from *The Record*, Oct. 1920, p. 420 <http://cdm.csbsju.edu/u/?/CSBArchNews,21267>

Reading

N. B.
Flagrant insubordination,
habitual idleness,
habitual disregard
or contempt of the above rules,
not to mention grosser offenses,
will be punished with dismissal
from the School.

N.B.!

Special Rules for Occupants of Private Rooms



THE NEW BUILDING

Image from the 1921-22 *Sagamitan*, p. 14

Special Rules for Occupants of Private Rooms (Benet Hall)

Special Rules for Occupants of Private Rooms

1. No student shall use the Seminary toilet.

Ad from *The Record* June 1920 p. i266
<http://cdm.csbsju.edu/u/?CSBArchNews,21826>



True Home Comfort
requires a modern Porcelain shower bath.
It invigorates and delights the men folks

Toilet/shower

2. Private room students are not permitted to receive other students in their rooms; neither are they permitted to *visit* with one another.

If for reasons of study they find it necessary to confer in their rooms, they must leave the door open.

Such a conference shall not last longer than *five* minutes.



Image from *The Record* March 1920 p. 106
<http://cdm.csbsju.edu/u/?CSBArchNews,21404>

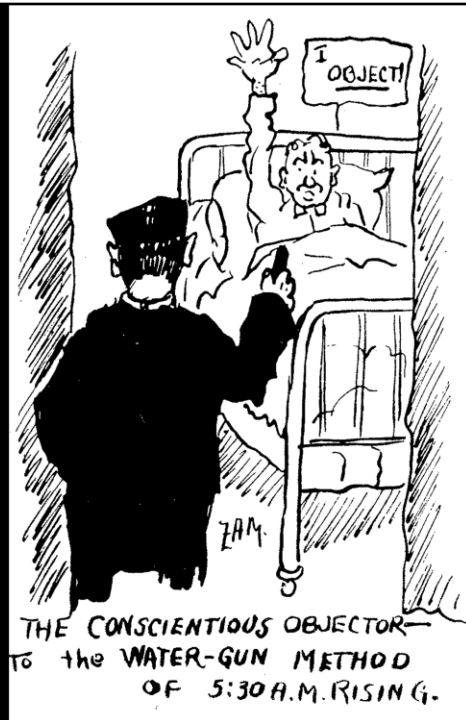
Socializing

3. Silence must be observed after 7:30 p.m. ...

All lights must be off at 9:30 p.m.

5. Each one shall make his own bed before 8 a.m., and keep his room at all times neat and tidy.

Image from 1920 *Sagatagan*, p. 89



Silence/making beds

10. Failure in *two* subjects in any quarter will entail forfeiture of the room

' The saddest words of tongue or pen
Are these: "My boy, you've flunked again." '
—D. N. S. in *Fleur de Lis.*

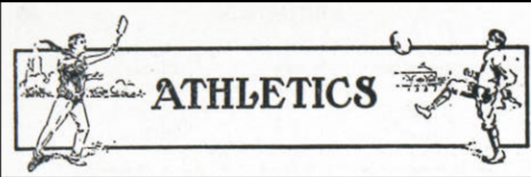
12. Reading of magazines and newspapers in the rooms, except those expressly approved by the authorities, is forbidden.
13. All shall assemble in the common study hall for night prayers.

Image from *The Record* Dec. 1920 p. 549 <http://cdm.csbsju.edu/u/?CSBArchNews,21519>

Flunking/magazines/prayers

Image from *The Record* Dec. 1920 p. 549

<http://cdm.csbsju.edu/u/?CSBArchNews,21519>



Special Rules for Members of the Squads

2. Failure in one fourth of his class work shall disqualify any member from intercollegiate athletics.
3. Any member whose monthly *conduct* note falls below D twice during the athletic season shall be put off the team.
4. Any member who has conducted himself in a manner which would bring dishonor to the School...shall not receive a letter "J."



Image from the 1919 *Sagatagan*, p. 49

Special Rules for Athletes

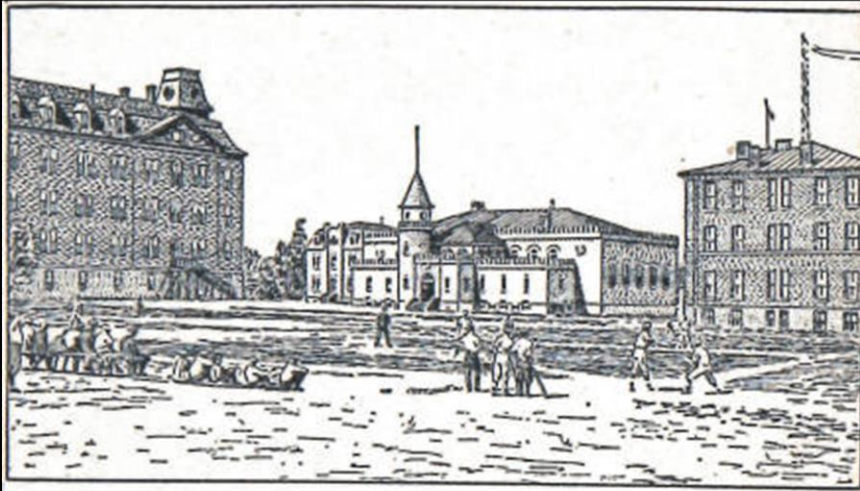


Image from *The Record* Feb. 1, 1920, p. i45 <http://cdm.csbsju.edu/u/?CSBArchNews,21322>

Residential Life at St. John's in 1920

All text and images from the SJU Archives. *All rights reserved.*
Compiled in November 2010 by Peggy Landwehr Roske, CSB/SJU Archivist

Residential Life at St. John's - credits