

College of Saint Benedict and Saint John's University

DigitalCommons@CSB/SJU

Archives History Lessons

Archives

2014

Lake Sagatagan's Pickerel Point Bridges

Peggy L. Roske

College of Saint Benedict/Saint John's University, proske@csbsju.edu

Follow this and additional works at: https://digitalcommons.csbsju.edu/archives_history_lessons

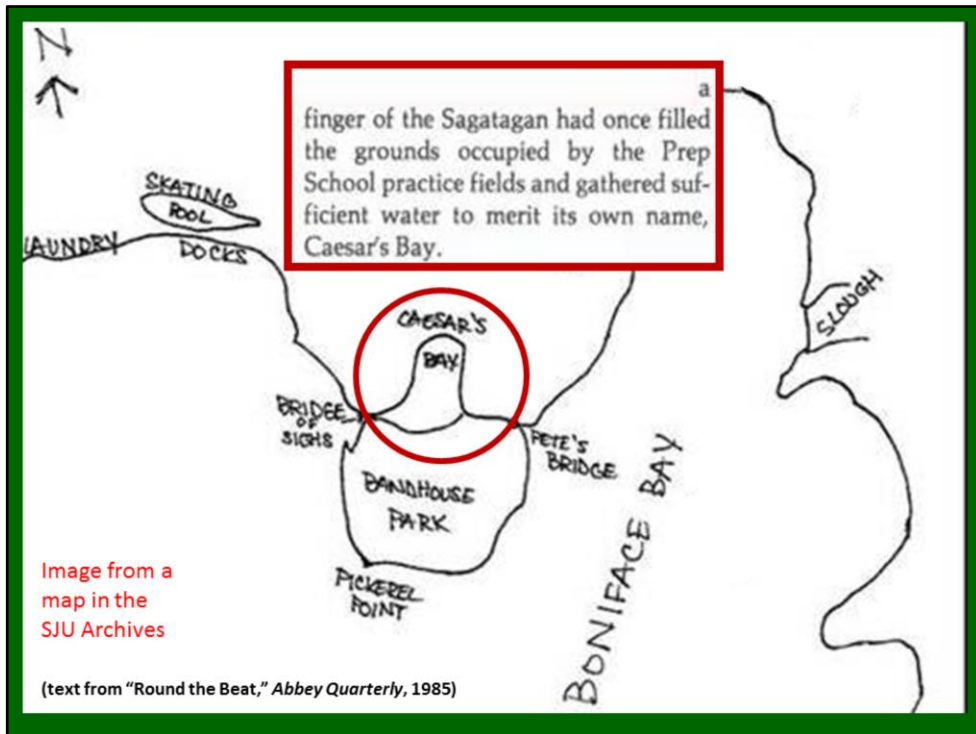
Recommended Citation

Roske, Peggy L., "Lake Sagatagan's Pickerel Point Bridges" (2014). *Archives History Lessons*. 44.
https://digitalcommons.csbsju.edu/archives_history_lessons/44

This Presentation is brought to you for free and open access by DigitalCommons@CSB/SJU. It has been accepted for inclusion in Archives History Lessons by an authorized administrator of DigitalCommons@CSB/SJU. For more information, please contact digitalcommons@csbsju.edu.



<https://maps.google.com/maps?q=56321%5C&hl=en&ll=45.578461,-94.386753&spn=0.004708,0.009645&sll=46.44186,-93.36129&sspn=9.493978,19.753418&t=h&hnear=Collegeville,+Minnesota+56321&z=17>



Angelo Zankl, OSB, "Round the Beat," *Abbey Qtly*, Jan1985 p.3
Zoomed-in Lake Sagatagan map at
<http://cdm.csbsju.edu/cdm/singleitem/collection/SJUArchives/id/1739>



<https://maps.google.com/maps?q=56321%5C&hl=en&ll=45.578461,-94.386753&spn=0.004708,0.009645&sll=46.44186,-93.36129&sspn=9.493978,19.753418&t=h&hnear=Collegeville,+Minnesota+56321&z=17>



CAESAR'S BAY.

"This little corner of the lake received the classical name far back, in the early days of the institution. It is almost entirely cut off from the main lake, the waters of which, ever since the rise several years ago, found their way into through a narrow passage on the west end. A canal was dug in 1893 connecting Caesar's with Boniface Bay and thus there is no danger of its turning into a swamp.

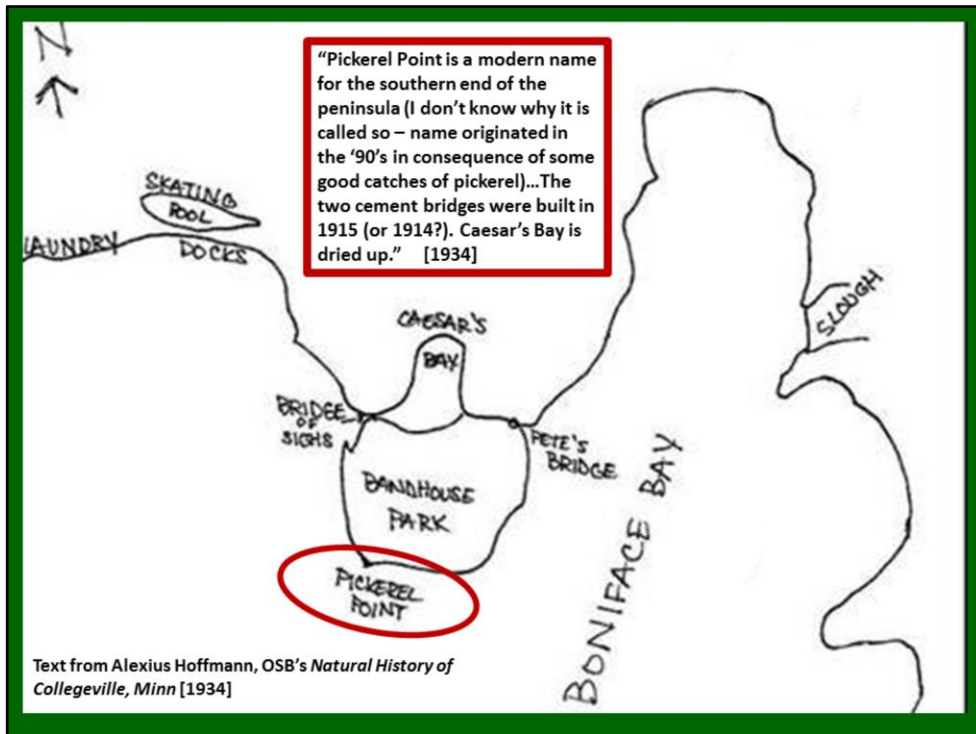
"In winter the Bay is one of the finest places frozen and available for skating. In summer it is a lily bed with large fragrant white lilies, the heart-shaped leaves of which float lazily upon the water and give shade to the shoals of minnows and countless frogs that populate the quiet deep. The musk-rat also has his headquarters here, his house rises from the middle of the pond like an inaccessible castle, from which he makes sorties in every direction for food until he is captured.

"Young trees have been planted all around it and in a few years this will be one of the most delightful spots in the environs of St. John's."

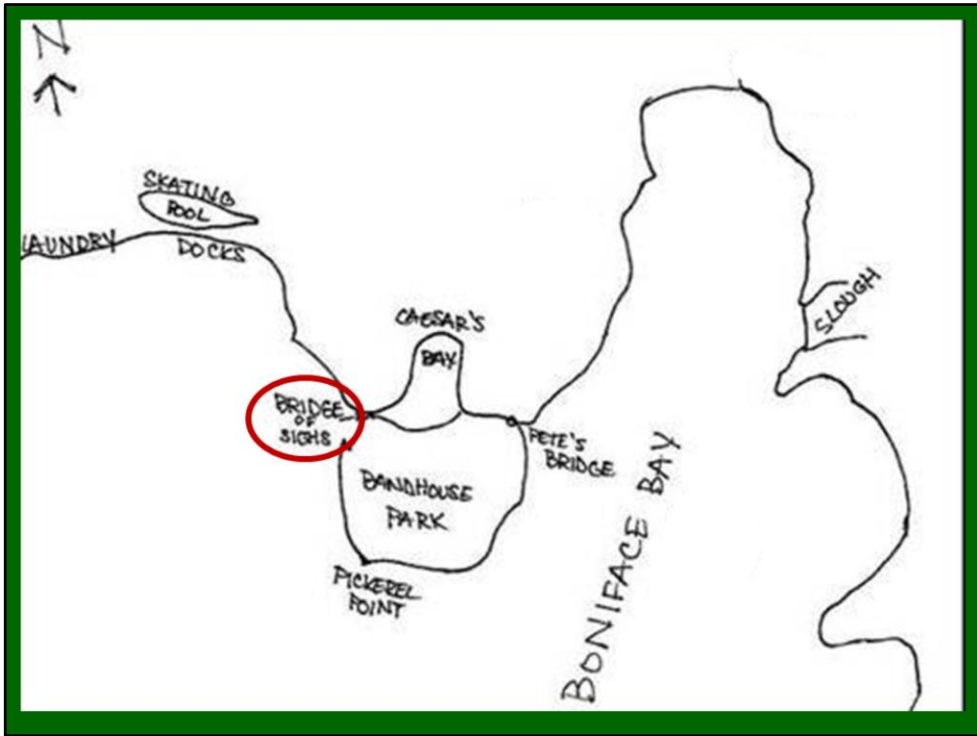
The Record
Nov. 1897

<http://cdm.csbsju.edu/cdm/ref/collection/CSBArchNews/id/9806/show/9792> *The Record* Nov. 1897 p. 205

Also published in the *St. Cloud Daily Times* Jan. 20 1897?



<http://cdm.csbsju.edu/cdm/ref/collection/SJUArchives/id/5466>



“The Bridge of Sighs is a bridge located in Venice. It connects the New Prison to the interrogation rooms in the Doge’s Palace.

The bridge name, given by Lord Byron in the 19th century, comes from the suggestion that prisoners would sigh at their final view of beautiful Venice through the window before being taken down to their cells.”

Wikipedia



Text from http://en.wikipedia.org/wiki/Bridge_of_Sighs

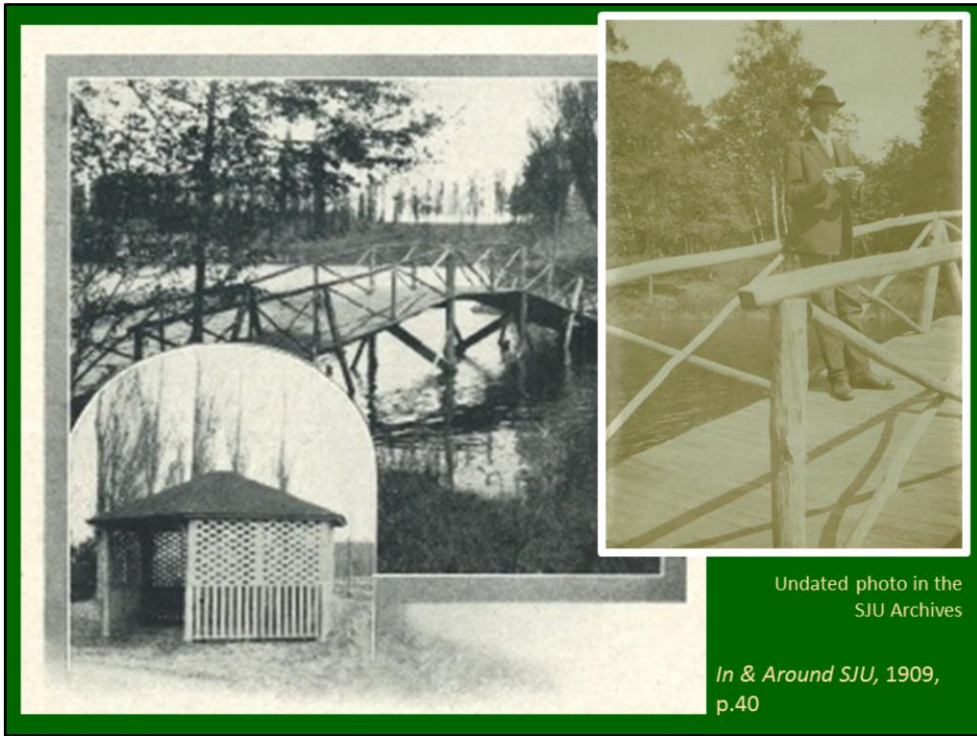
Image from

http://upload.wikimedia.org/wikipedia/commons/thumb/c/cb/Ponte_dei_sospiri_bridge_of_sighs_venice.jpg/154px-Ponte_dei_sospiri_bridge_of_sighs_venice.jpg



from the matted photographs collection in the SJU Archives

“Caesar’s Bridge – St. John’s – 1888?” from the matted photographs collection in the SJU Archives



From *In & Around SJU* 1909 p.40



ST. JOHN'S UNIVERSITY, FROM THE SOUTHEAST, COLLEGEVILLE, MINN.

undated postcard



Bridge of Sighs, about 1914. Abbey Archives photo.



Undated photo in the SJU Archives

Wood has been replaced by
concrete and metal

Angelo Zankl, OSB, "Round the Beat," *Abbey Qtly*, Jan. 1985, p.3
Photo from PC0x, p. 47



"ADRIANOPE" PINES IN WINTER, ST. JOHN'S UNIVERSITY,
COLLEGEVILLE, MINN.

From red scrapbook in the SJU Archives, compiler unknown



Laundry, bridge – date unknown; Ascherman collection LP064
Stone (west) bridge photo taken Nov. 16, 2009 by PLR



“Maxie” photo from red scrapbook in the SJU Archives, p. 23, compiler unknown
Text from *The Record* July 29, 1955, p. 3
<http://cdm.csbsju.edu/cdm/ref/collection/CSBArchNews/id/31351/show/31349>
Stone (west) bridge photo taken Nov. 16, 2009 by PLR

CAESAR'S BAY.

"This little corner of the lake received the classical name far back, in the early days of the institution. It is almost entirely cut off from the main lake, the waters of which, ever since the rise several years ago, found their way into through a narrow passage on the west end. A canal was dug in 1893 connecting Caesar's with Boniface Bay and thus there is no danger of its turning into a swamp.

The Record Nov. 1897 p.205

On the east side of Pickerel Point:

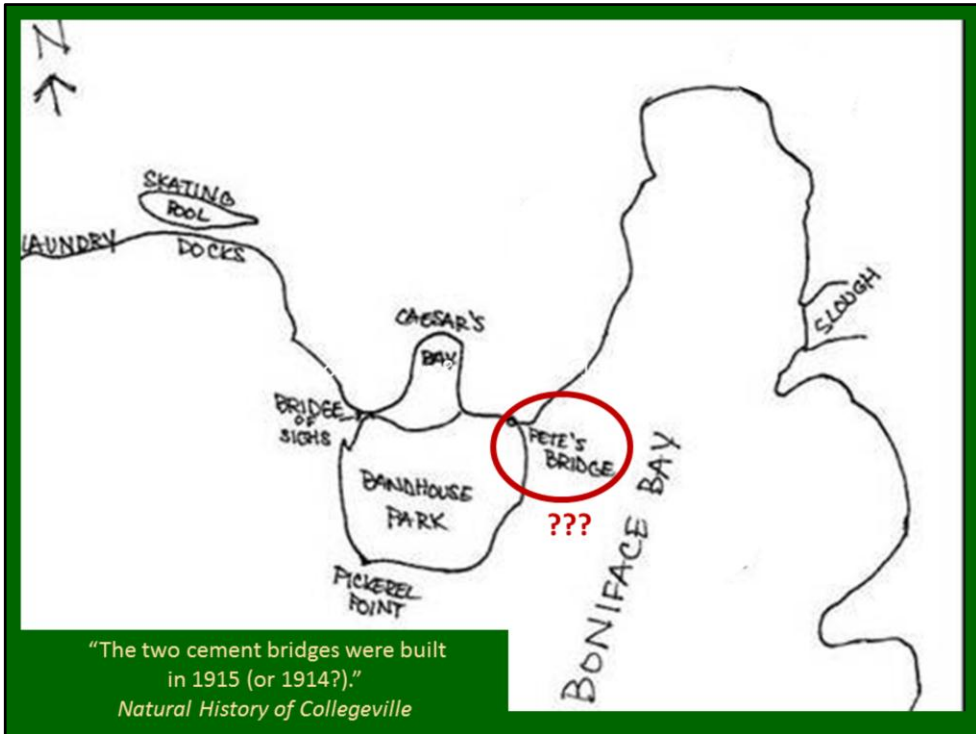
"A canal was dug by the scholastics in '93 or '94 from Caesar's to Boniface Bay."

Natural History of Collegeville



<http://cdm.csbsju.edu/cdm/ref/collection/CSBArchNews/id/9806/show/9792> *The Record* Nov. 1897 p. 205

Also published in the *St. Cloud Daily Times* Jan. 20 1897?





Two new "bridgelets" have been constructed in the path around Pickerel Point. To the cement bridge, that was constructed at the west outlet of Caesar's Bay last year a very artistic touch was added by extending the bridge and adorning it with concrete work. The other bridge, the Prefects' Bridge, situated at the east outlet of Caesar's Bay on the path around the bounds, is made of rubblework and looks real rustic.

The Record Oct. 1917

"Pete's" Prefect's bridge !?!

The Record 1917 Oct. p.466-467

<http://cdm.csbsju.edu/cdm/ref/collection/CSBArchNews/id/20786/show/20757>



Archives photo scanned in 2007
Color photo taken Nov. 16, 2009 by PLR



Compiled in January 2014
from resources in the archives of
Saint John's University,
Saint John's Abbey
and elsewhere as noted
by Peggy Landwehr Roske,
CSB/SJU Archivist
All rights reserved.

Caesar's Bay – east bridge photo taken Nov. 16, 2009 by PLR