

College of Saint Benedict and Saint John's University

**DigitalCommons@CSB/SJU**

---

Libraries Staff Publications

Libraries

---

5-17-2024

## Radio at Saint John's University: Antennas to Long-Playing Legacies

Bonnie Finn

*College of Saint Benedict/Saint John's University*, [bfinn001@csbsju.edu](mailto:bfinn001@csbsju.edu)

Follow this and additional works at: [https://digitalcommons.csbsju.edu/library\\_pubs](https://digitalcommons.csbsju.edu/library_pubs)



Part of the [History of Science, Technology, and Medicine Commons](#), and the [Radio Commons](#)

---

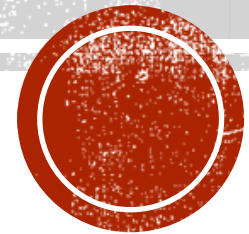
### Recommended Citation

Finn, Bonnie. "Radio at Saint John's University: Antennas to Long-Playing Legacies." Presented at the 2024 ARSC Conference, Minneapolis, MN, May 15-18, 2024.

This Presentation is brought to you for free and open access by DigitalCommons@CSB/SJU. It has been accepted for inclusion in Libraries Staff Publications by an authorized administrator of DigitalCommons@CSB/SJU. For more information, please contact [digitalcommons@csbsju.edu](mailto:digitalcommons@csbsju.edu).

# **RADIO AT SAINT JOHN'S UNIVERSITY:**

## **Antennas to Long-Playing Legacies**



Bonnie Finn | Fine Arts Librarian  
College of Saint Benedict and Saint John's University  
Saint Joseph and Collegeville, MN  
ARSC Annual Conference  
Friday, May 17, 2024



# Land Acknowledgement

Both the College of Saint Benedict and Saint John's University occupy the original homelands of the Dakhóta and Anishinaabe peoples. We honor, respect, and acknowledge the Indigenous peoples forcibly removed from this territory, whose connection remains today. St. Benedict's Monastery and St. John's Abbey previously operated boarding schools for Native children. Now, students, faculty, and staff are working to repair relationships with our Native Nation neighbors.

CSB+SJU Indigenous Student Association



# 2024: College of Saint Benedict and Saint John's University (CSB+SJU)



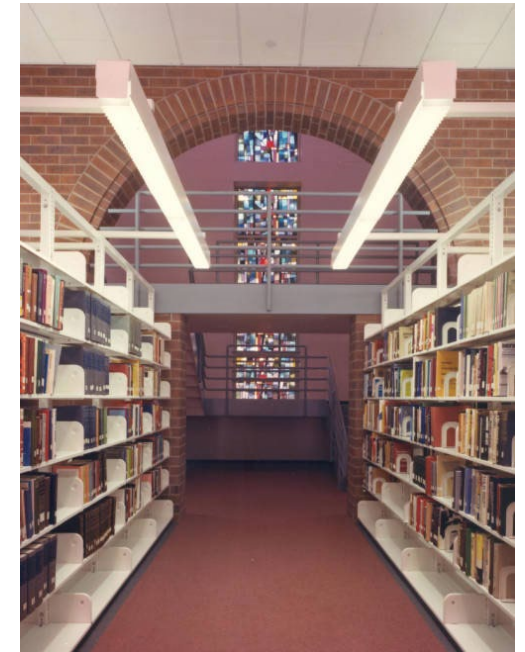
SJU Alcuin Library



SJU Alcuin Library interior – renovated 2016



CSB Clemens Library entrance



CSB Clemens Library bell tower windows and stacks



CSB Benedicta Arts Center (BAC)

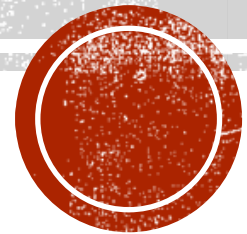


- 2 institutions (each has about 1375 students), jointly share curriculum, IT, and library services
- 2 campuses, 5 miles apart (bus shuttles students)
- 2 main libraries – 1 on each campus, plus a music library in the Arts Center @ CSB



# EARLY INNOVATIONS

Antennas and Radio



# Tradition, Creativity, and Innovation

- Beginning with interest in “wireless telegraphy,” in the early 1900s, CSB+SJU has been a place of innovation utilizing new technologies
- Early influencers include monks from the Order of Saint Benedict
  - Fr. Hilary Doerfler, physics instructor
  - Fr. Peter Engel, physics instructor, abbot
  - Fr. Colman Barry, SJU president
- According to Gary Eichten, “The Benedictines had this tradition of going into the broader community and taking the word to the people. Fr. Colman decided a great way to literally and figuratively spread the Gospel is to have a radio station.”



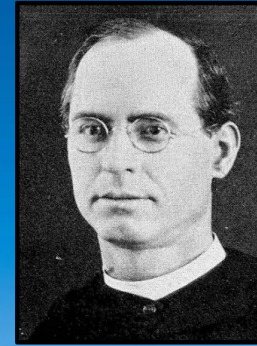
# SJU Radio Antenna



1915 radio antenna "Colored by Fr. Alban Gertken."

During the Christmas vacation of 1914 Father Hilary Doerfler, an instructor in the physics department, purchased a wireless apparatus.

*Scriptorium* Dec. 1944 p. 38-39



REV. HILARY DOERFLER, O. S. B.  
Professor of College and College Preparatory  
Physics, Shopwork  
President and Director of College Radio  
Club

Image: 1926 Sagatagan

*Scriptorium* 05/1 : 1944 : p.035 ROLFSON, GUNTHER -- OUR SCIENTIFIC ENDEAVOR p. 38-39

Photo from 1926 Sagatagan, p. 19

<http://cdm.csbsju.edu/digital/collection/SJUArchives/id/18893/rec/25>

Doerfler text box is from the 1923 yearbook p. 17

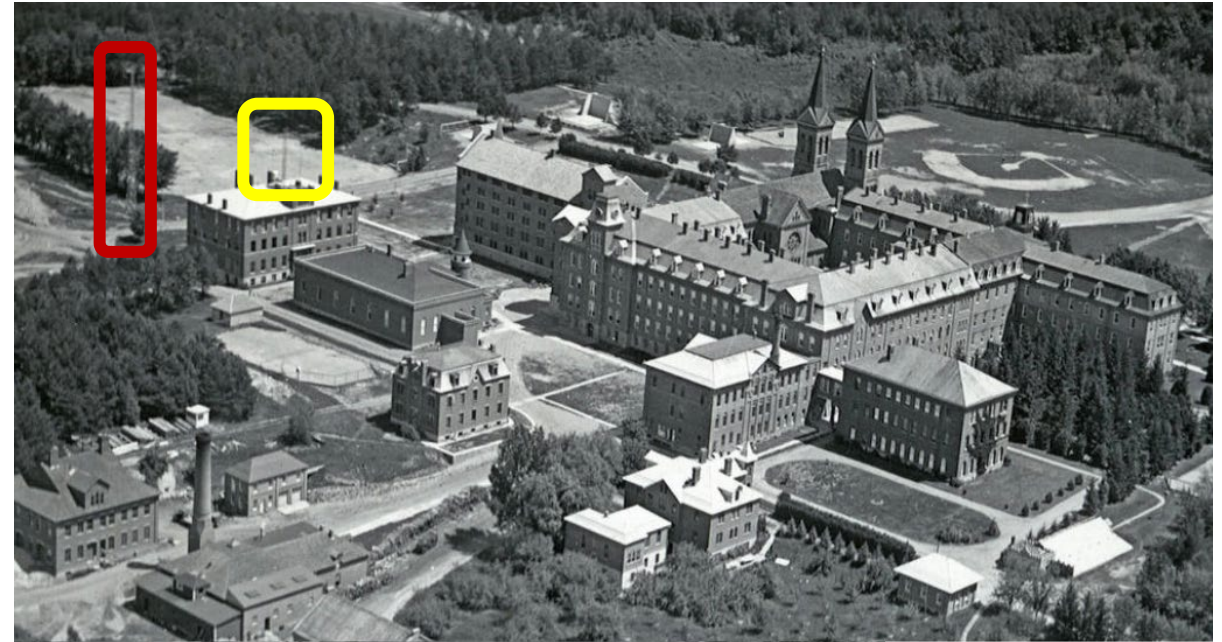
<http://cdm.csbsju.edu/digital/collection/SJUArchives/id/17213/rec/20>

- Father Peter Engel, OSB
  - Abbott from 1894-1921
  - Scientist, fascinated by wireless telegraphy
- 1914
  - During Christmas break, Fr. Hilary Doerfler, a physics instructor, purchased a wireless apparatus



# SJU Radio Antennas

- After Fr. Engel erected the 80-foot radio tower (red) next to campus science building, it did not work
  - Erected 2<sup>nd</sup> tower on the science hall (yellow)
  - Headquarters for the wireless department in room on the first floor
- 1915 Dec 18
  - First message went out announcing SJU basketball victory over Melrose
- 1917
  - Radio operation ordered closed down by the war department when US entered WWI
    - Saint John's was heavily German
    - Anti-German opinions after a German sub sank the *Lusitania*



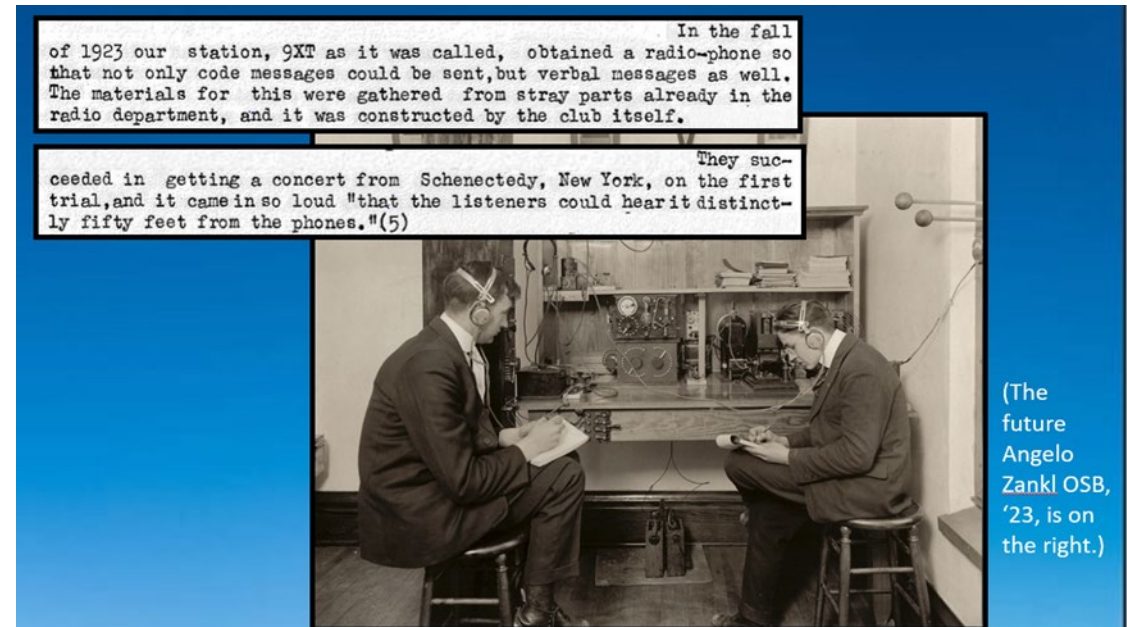
1920s (between 1922 and 1928) aerial view,  
<http://cdm.csbsju.edu/digital/collection/SJUArchives/id/6307>





# SJU Radio 9XT

- 1922 November 30
  - High winds took the tower down
  - Replaced with a larger tower, which was removed in 1938
- 1923
  - Father Hilary, OSB organized and moderated a radio club which communicated with stations throughout the US and Canada
    - Equipped with a radio-phone in order to send both code and verbal messages
  - 1<sup>st</sup> concert came from Schenectady, NY
    - So loud listeners could hear 50 feet from the phone
    - Vocal messages could be sent 500 miles
    - Listened to concerts, lectures, and news reports
  - "Radio Notes" was a regular feature in *The Record* (student newspaper) during these early years
- Minutes of College Radio Club skip from 1928 to 1948 without missing a page
- Radio Club appears to disband until its 1948 return focused on ham radio as Station W-Zero-OEZ



Scriptorium 05/1 : 1944 : p.035 ROLFSON, GUNTHER -- OUR SCIENTIFIC ENDEAVOR p. 38-39  
(5) The blow-down was on Thanksgiving Day: *The Record* Dec. 1922 p.484  
<http://cdm.csbsju.edu/digital/collection/CSBArchNews/id/23124/rec/41>



# SJU 1<sup>st</sup> Radio Station WFBJ

*The Record* Nov. 27, 1924, p.1 & 3

## *Station WFBJ Coming to Fore*

### Communicates Directly With Seattle

How many of us know what the radio is—and in what it differs from the wireless? The only difference is that radio has replaced the obsolete word 'wireless'. The wireless telephone was long in existence before the word 'radio' came into its own. It is also apparent that the word wireless sounds too much like a paradox, since the first approach to a station is a network of wires in the air.

At present, Father Hilary, in charge of the local station, is conducting experiments to ascertain the behavior of the antennae, that is, to measure its resistance. There are three kinds of antennae resistance, namely, High Frequency, Dielectric, and Radiation Resistance.

(Continued on page 4)

## *Station WFBJ to Fore*

(Continued from Page 1)

The result of this analysis will enable him to tell on what wave length he will be able to reach farthest.

The local station has recently communicated directly with an outfit in Seattle Washington, a distance of 1350 miles, and also with a station in Texas—communication being carried on by code. At midnight it is possible to send ten to twenty times farther than at mid-day.

A proof of the efficiency of our station is based upon the test made several days ago when a person, 65 miles distant, reported that he could hear and understand our transmitting with the phones lying on the table, and as loud as the Twin City Station, which is twice is twice as distant. The Twin City Station has also ten times as much power as is used here. This feat gives us the hope that we may soon reach out to 500 miles.

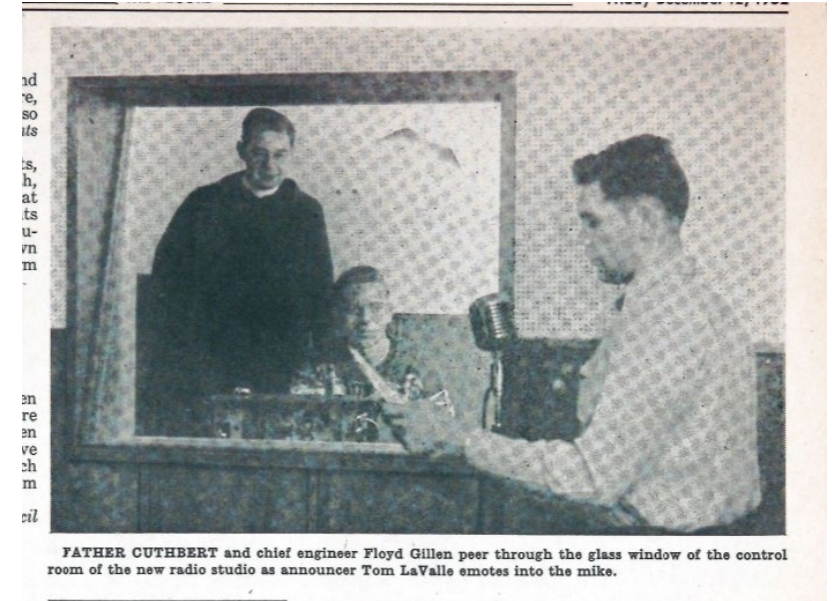
The Record Nov. 27, 1924, p.1 <http://cdm.csbsju.edu/digital/collection/CSBArchNews/id/30011/rec/4>  
...and p.3 (not 4) <http://cdm.csbsju.edu/digital/collection/CSBArchNews/id/30013/rec/45>

- 1925
  - Under direction of Fr. Hilary, WFBJ Radio Station broadcasted from science hall
  - Radio station with two transmitters installed on the first floor.
  - Radio WFBJ one of the pioneer stations in the Upper Midwest
- Minnesota received W call signs from 1912 until January 1923, when a boundary shift to the Mississippi River transferred it to K territory.
  - WFBJ weekly broadcasts included sacred concerts, band programs, orchestra concerts, lectures, and games, often a lecture prefaced with an instrumental number
- 1928 technical details: wave length was 272.6, which corresponded to 1100 kilocycles.
- 1928 October 4: *The Record* column "Ether Etchings" stated that the radio apparatus had broken but would be rebuilt
- Mention of WFBJ disappears from *The Record* after Feb 21, 1929 when it stated the repairs needed were waiting on a part.



# The Years of SJU Radio Alternatives

- 1939 December 7
  - SJU began broadcasting weekly series, “Johnnies on the Air” on KFAM in St. Cloud
    - KFAM donated  $\frac{1}{4}$  hour of free time each week
- Sometime shortly before 1950, broadcasts moved to KASM Albany
- 1951 September
  - Moved to station WJON St. Cloud
  - “St. John’s on the Air” expanded to a weekly  $\frac{1}{2}$  hour program
    - broadcast of life and activities at SJU
- 1952 November
  - New sound-proof studio complete
  - Added 2 recorded classical music programs with student announcers
  - Still aired programming on WJON
- 1953 September 25
  - The Radio Workshop 4<sup>th</sup> year opening broadcast of “St. John’s on the Air” featured Father Colman Barry, OSB speaking on his forthcoming book about the history of Saint John’s.
  - Fr. Colman commented on wide variety of programs given by “St. John’s on the Air” over the past 3 years, beginning in the fall of 1950
  - Fr. Colman features prominently in continuing radio at SJU



FATHER CUTHBERT and chief engineer Floyd Gillen peer through the glass window of the control room of the new radio studio as announcer Tom LaValle emotes into the mike.

Father Cuthbert and chief engineer Floyd Gillen peer through the glass window of the control room of the new radio studio as announcer Tom LaValle emotes into the mike. *The Record* 1952 December 12.



# Student Radio at SJU: KSJU beginnings

- 1954 September 24
  - Radio Workshop auditions held
    - 40 candidates attended tryouts
    - 10-man staff developed the year's workshops
    - 35 weekly programs consisted of dramatics, music, and convocation talks over WJON
    - Out of this group came skeleton staff to operate Station KSJU, St. John's local broadcasting center in Mary Hall
- 1954 December 6
  - KSJU began operation
    - Frequency 1000 kilocycles
    - Operated 4pm-5:30pm and added Sunday morning broadcast
    - Built by Fr. Casper Keogh
      - Operated on 25 watts
      - Located in the quarters of the Radio Workshop
      - Closed-circuit station
        - Only broadcasted on SJU's campus
    - KSJU provided practical experience opportunities to the new radio speech class taught by Fr. Cuthbert Soukup, OSB.
    - WJON weekly programs will continue as well

- 1957 December
  - KSJU added a radio console, additional broadcasts for news, and new staff members
  - Received regular shipments of 45rpm and LPs
  - No antenna, only heard on radios plugged directly into wall sockets
  - Frequency 660 kilocycles
- 1958 September
  - Installed a satellite radio transmitter to extend coverage to St. Ben's
  - Added teletype and line running to St. Ben's
- 1958 November
  - 1<sup>st</sup> station in Minnesota to add stereophonic sound
    - only available at SJU
    - 2 radios – one tuned to KSJU radio 660, the other to 1610
    - Radios placed 4-6 feet apart to obtain proper contrast between speakers



# KSJU Growth

- 1960 Feb
  - Record library contained 83 LP classicals and 80 LP regulars in stereo
- 1961 December
  - Record library exceeded 2000 LPs of nearly all types of music
  - Added complete coverage of Johnnie football and basketball games
  - Complete coverage of SJU and CSB on 2 channels – 660 and 870 – KSJU Stereo Radio
- 1962 November
  - 9<sup>th</sup> year grew to an 83-hour week
  - Featured popular, jazz, and classical music
  - KSJU moderated by Fr. Daniel Durken, OSB
  - Gar Mulrooney, manager; Mike Obler, assistant manager; Bill Kling, chief engineer; Paul Hamann, sales manager; Dick Jessen and Mick Markson, program directors
  - 28 other staff members
- 1964
  - Bill Kling, acting manager and chief engineer
  - 38 staff members
  - Kling states there were about 2400 stereo albums
    - Largest collection in Stearns County
    - Added an FM receiver to receive Twin City FM stations
    - World's only AM stereo station



Foreign students John Cheung and Dominic Chow discuss the problems of Chinese refugees in their home city of Hong Kong with Dr. Ross Horning in preparation for KSJU's "International Corner."

International Corner program. *The Record* 1962 November 16



JOHN ANDERSON, classics director, looks on as manager and chief engineer Bill Kling, in the station's Dave Ploumen, ad man, explains the accounts to acting new office in the basement of the auditorium.

John Anderson, classics director looks on as Dave Ploumen, ad man, explains the accounts to acting manager and chief engineer Bill Kling, in the station's new office in the basement of the auditorium. *The Record* 1964 March 20

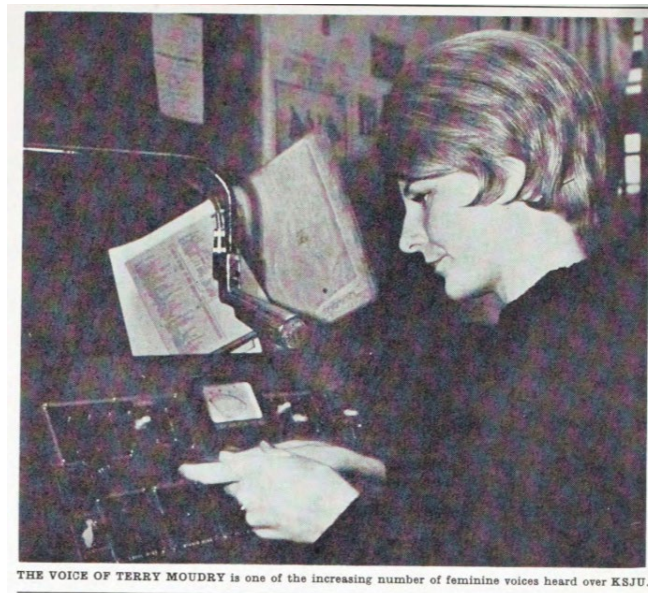


# KSJU Goes CoEd

- 1965
  - CSB students (Bennies) DeeJay at KSJU
    - 5 junior Bennies organized inclusion of women in the operation of KSJU
    - Staff members from CSB wrote Bennie news, copy for ads, served as deejays and engineers
  - 11<sup>th</sup> year - continued growth
    - Programming in jazz, pops, classics (did not program rock and roll)
    - Added equipment to be a stronger AM station
      - School of Nursing in St. Cloud as new listening audience
    - Staff doubled in 4 years



Cahil and Murray, Emcees...KSJU: Service with a smile.  
*TheTorch* 1965 February 5



The voice of Terry Moudry is one of the increasing number of feminine voices heard over KSJU. *TheTorch* 1965 November 5



# KSJU changes

- 1975
  - 22<sup>nd</sup> year
  - Began looking at broadcasting FM
- 1977
  - KSJU finally operating FM educational station 89.1 MHz
  - Delivered quality signal within a 20-mile radius
    - Potential audience of almost 60,000 people
- 1978-1985
  - KSJU broadcasted at 96.5 FM
- 1985
  - STAR 96 (KKSR) from St. Cloud came on air at 96.7 FM
    - Broadcast at higher wattage and blocked KSJU signal
- 1990
  - Access to KSJU only by cable connection hooked to radio and tuned to 99.9 FM or Ch. 6
- 1992
  - Added fiberoptic line to CSB
  - Tried to apply for FCC licenses to become a public station again
    - Cost was prohibitive, paperwork extensive
    - Did not ever receive



KSJU studio. *The Record* 1992 September 17



# KJNB

- 1993
  - To acknowledge the participation of CSB in the radio production, KSJU changed its call sign to KJNB
- 1997
  - Online streaming format through Real Audio
- 2000
  - Moved to Guild Hall basement
  - Could also be heard on Ch 6 through cable
- 2003
  - 19 executive members and over 30 djs
  - Played range of music from alternative and rock to old-school hip-hop and reggae
- 2005
  - Began airing on the web in addition to Ch 6
- 2008
  - Combined resources with *The Record* student news for streamlined online services
- 2014
  - Streamed Johnnie sports live
    - Initiative headed by former SJU President Michael Hemesath

## KJNB RADIO STATION



Students are heard on



Joel Coleman and Lindsey Waytashek host the program "We Are Golden" on Tuesdays.

# kjnb

KJNB is dedicated to the roots of college radio. That is, we take pride in playing all music worth merit. We don't confine our range to one musical format or to a few songs played over and over. The popular sounds of tomorrow are played on KJNB today. We have the flexibility to experiment with new bands and new sounds; we take risks that commercial radio would never take. KJNB promotes the knowledgeable consumption of music. This is a standard we try to live up to each and every broadcast day.

Speak. Listen. Get involved.

KJNB is looking for Deejays – stop by the station (basement, Mary Hall) and pick up an application. In the meantime, stay tuned to the Channel 6 bluescreen for what goes on and all that matters on KJNB.

Listen. All the time.





# Student Media at CSB and SJU: KJNB to Johnnie Bennie Media

- 2015
  - KJNB was called Johnnie Bennie Radio
    - Provided an alternative for promoting students in CSB+SJU community
    - Podcasts had become more popular and went live on the radio.
    - Still located in Guild Hall basement
  - Johnnie Bennie Media became a student organization
    - Advanced audio (such as radio, podcasts, music), campus news, video production.
    - Located in Colman Barry Creativity Center



ASHLEY GROEBNER • [agroebner@csbsju.edu](mailto:agroebner@csbsju.edu)  
Molly Kleuver and Tom Hawkins host "Off the Record" on Mondays at 5 p.m.



# Colman Barry Creativity Center

- 2017
- Opened in the Learning Commons attached to Alcuin Library
- Colman Barry Creativity Center
  - Kling Media Lab
  - Armstrong Video Studio
  - Interest in new technologies at CSB+SJU still evolving



Recording chamber



Kling Media Lab



Armstrong Video Studio

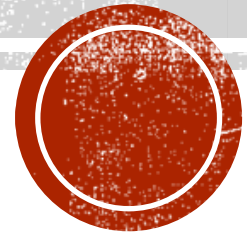


Advanced Video Production Suite



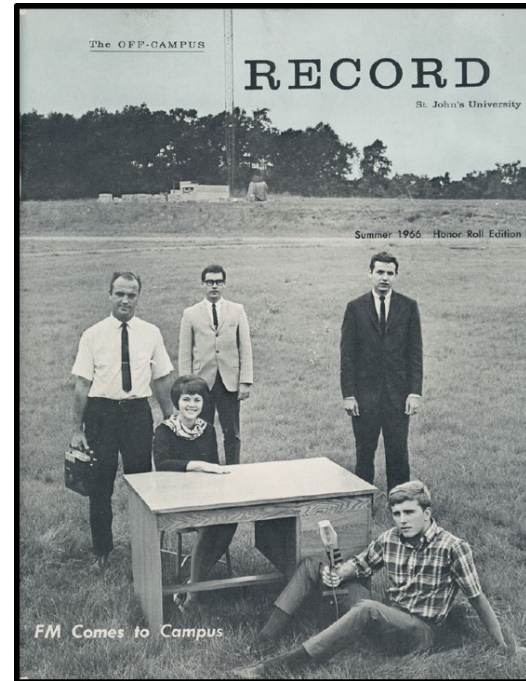
**KSJR-FM**  
**KSJN-FM**

Origins at SJU



# KSJR-FM Beginnings

- Fr. Colman Barry '42, SOT '47, OSB
  - Offered to pay for Bill Kling's '64 ' grad school if he came back to SJU to start a radio station – he agreed!
- On-air broadcasting started January 27, 1967
  - Began as 40,000 watt, but after a few months moved to 150,000 watts, with a gift from Dr. Wenner.
  - Brought classical music, lectures, jazz, poetry, live broadcasts of SJU football to a 70-mile radius
  - Music came from transcriptions of concerts around the country and a library of LPs that grew rapidly.
- Original staff: Bill Kling '64, manager; Gary Eichten '69, announcer (started as sophomore); Dan Rieder, engineer; Tom Kigin '70, monthly program guide (started as freshman); Michael Obler '64, program production director
- Kling stated it was a success despite “intermittent on-air time because of static electricity in the studio carpet and gophers gnawing through the power line to the distant transmitter, but little audience and little financial support.” (Kling, SJ at 150)
- Financial support was an on-going challenge in the early years



“The arrival of FM radio made big waves on the St. John’s Campus in the summer of 1966. Bill Kling, Dan Rieder, John Hovanec, Mike Obler, and Nancy Unger are pictured here on the cover of the Summer 1966 edition of *The Off-Campus Record*.”

## Stereo-FM Radio Comes to Saint John's

Saint John's University received the green light from the Federal Communications Commission on August 18th to construct a 40,000-watt stereo-FM educational and fine arts radio station with primary transmitting facilities and studios on its campus.

Construction of the station is now underway on the top floor of the Old Library, now called Wimmer Hall. The third floor spaces are being renovated to house the broadcast studios and the new Communications and Theatre Department.

Application was filed recently with the FCC for construction of a booster transmitter in the Minneapolis-St. Paul area.

Optimum reception will be available to listeners within a 70-mile radius from the transmitter tower at Collegeville. When the transmitter is completed in the Twin Cities area, some 2,362,000 people will receive the strong signal of KSJR-FM, the station's new call letters.

Hopefully, the station will begin programming sometime late this fall.

### Staffing

William H. Kling, Saint John's new Director of Broadcasting, will manage KSJR-FM. A graduate of the University, Class of 1964, Bill Kling obtained a Master's Degree in Communication Arts from Boston University recently.

The Chief Engineer is Daniel Rieder, formerly with the Setchel Carlson Co. where he was engaged in color television circuitry research and with radio station WJON in St. Cloud.

Michael Obler, '64, is the station's program production director. Student John Hovanec, '68, will be the news director.

### Programming

KSJR-FM will offer a broad spectrum of cultural, educational and religious programs of outstanding quality, many of which have never been available before in the Midwest. The following is a sampling of

### KSJR's 398-foot antenna tower

the programming to be heard on KSJR-FM. In addition to discussions and musical performances will be broadcast from the campus.

### DRAMA

World Theatre (Weekly dramatic presentation produced by the British Broadcasting Company with occasional contemporary presentations produced in New York.)

### MUSIC

Boston Symphony Orchestra Concerts (Orchestra, Pops and Tanglewood series. Weekly live concerts.)

Library of Congress Concerts (Chamber music concerts recorded live at the Library of Congress.)

The Cleveland Orchestra Concerts (Full length concerts from Severance Hall, American and European tours, under the baton of George Szell.)

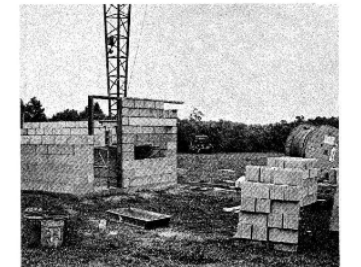
Music in Our Time (These concerts feature first performances of works by outstanding contemporary composers as recorded at Kaufmann Concert Hall in New York City.)

Italian Opera (A weekly stereo opera presentation produced by Radio-televisione Italiana.)

Just Jazz with Ed Beach (A two hour program with New York's foremost jazz authority. Each program is devoted to a particular jazz artist or style produced with the combined resources of the jazz library of WRVR.)



William H. Kling  
Director of Broadcasting



Half-completed structure (at left) will house the transmitter at the foot of the tower. The large roll of heli-cable (right) will be connected to the antenna near the top of the tower and the transmitter at the bottom.



# Wimmer Hall (1901) Home of KSJR-FM Radio

- Named for Abbot Boniface Wimmer, OSB (1809-1887)
- Designed by Charles R. Aldrich (1866-1939) of Minneapolis
- Originally designed to serve as SJU library
  - Alcuin Library completed in 1966 and left Wimmer Hall
- Fall 1966
  - Wimmer Hall third-floor reconstructed as a radio station
  - Included a good-sized soundproof studio for live music broadcasts



Wimmer Hall. SJUArchives\_5791\_largeWimmer  
<https://cdm.csbsju.edu/digital/collection/SJUArchives/id/5791>

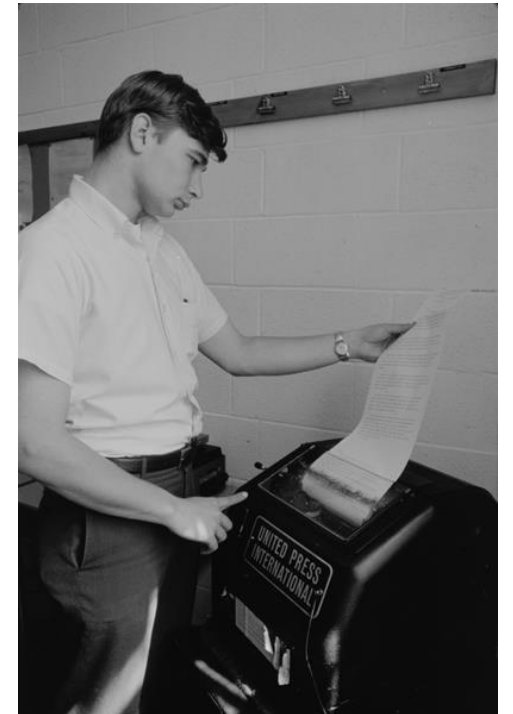


# KSJR-FM/KSJN-FM Early Years

- 1968
  - Saint John's applied for KSJN-FM
    - 3,400-watt station in New Brighton
- 1969
  - Fr. Colman, Fr. Gordon Tavis, Abbot Baldwin gave assets to a community corporation
    - First named Saint John's University Broadcasting, Inc.
    - Changed to Minnesota Educational Radio (MER)
- 1971
  - MER was one of 27 founding members of National Public Radio (NPR), which first aired in 1971.
- 1975
  - Evolved into Minnesota Public Radio (MPR) January 1, 1975
    - Gradual transfer of headquarters and operations to Saint Paul was beginning by 1974
    - Music was last to move – Collegeville record library had grown to 30,000 LPs
    - In Saint Paul, the collection continued to grow and size almost doubled



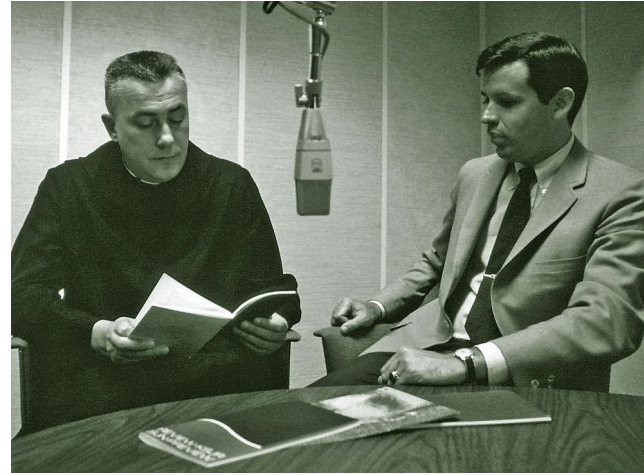
1967: Fr. Colman Barry '42, SOT '47, OSB and station manager Bill Kling '64



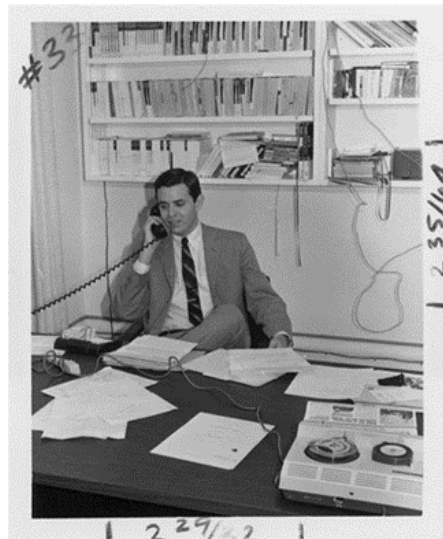
Gary Eichten '69 reads news off the United Press International ticker at the KSJR studio in Collegeville. Eichten began working for MPR on April 1, 1967, during his sophomore year at Saint John's.

# Fr. Colman Barry

- Fr. Colman Barry '42, SOT '47, OSB
  - MA Fordham University '49
  - Doctorate Catholic University of America '51
- 1956: St. Cloud Junior Chamber of Commerce named him outstanding young man of the St. Cloud area
- Saint John's University president from 1964-1971
- Persuaded monastic community to fund the KSJR-FM project
- Legacy includes creation of MPR, Hill Manuscript and Museum Library (HMML), and Jay Phillips Center for Jewish-Christian Learning (now Interfaith Learning)
- Passed away in 1994
- 1995 Colman J. Barry Award began

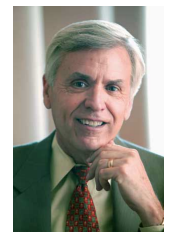


1967: President Fr. Colman J. Barry and Bill Kling examine an early program guide from KSJR-FM



Bill Kling '64 works the phones from his Collegeville office during MPR's early years.

# Bill Kling



Bill Kling '64

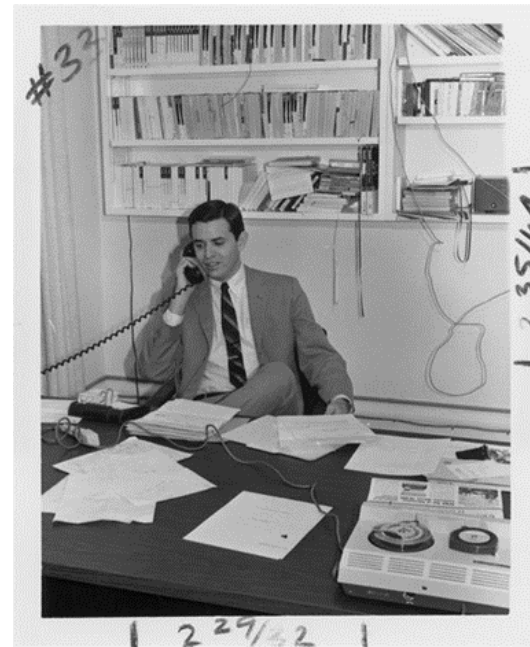
- Bill Kling '64, SJU; Boston University '66
- "KSJR shouldn't have succeeded, but it did because neither Colman nor I understood that it shouldn't have."
- Founder and president of MPR until retirement in 2011
- Designed studio complex in Wimmer Hall
- Bill Kling helped found National Public Radio
  - Served on first Board of Directors
- Kling also created American Public Radio (APR 1983) (worked with BBC),
  - National public radio network serving over 900 public radio stations
  - Broke off to become PRX and PRI
    - PRX and PRI merged in 2018
  - Became APM
- Numerous awards including
  - Edward R. Murrow Award (1981)
  - Colman J. Barry Award (2007)
  - One of 204 people elected to the American Academy of Arts and Sciences (2014)



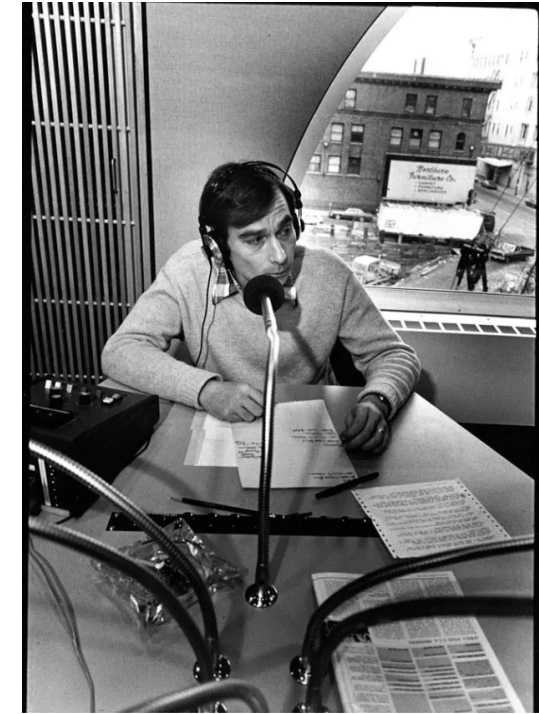
# KSJR-FM/KSJN-FM

## Quick Mentions

- Gary Eichten '67
  - Worked as a news director, special events producer, station manager
  - Host of MPR's "Midday" program.
  - Retired in 2012 after 45 years
- Tom Kigin '70
  - As a freshman, he began working at MPR before it went on air
  - Became network's executive vice-president, chief administrative officer and general counsel
- Michael Barone became 1<sup>st</sup> music director
  - Fr. Hilary Thimmish and Michael Barone did a half-hour prime time poetry and music program for a few months in 1969.
  - Host and senior executive of Pipedreams, distributed by American Public Media
- Garrison Keillor, morning disc jockey/classical music announcer
  - Known for "A Prairie Home Companion"
- Mark Zdechlik '87
  - Covered MPR health care and state government for the last three decades



Bill Kling '64 works the phones from his Collegeville office during MPR's early years.



Gary Eichten '69



Michael Barone was hired as MPR's classical music director in 1968. He spent his first nights in Collegeville sleeping on the floor of the music library in the KSJR studio.





# MPR Move to Saint Paul



**MINNESOTA  
PUBLIC RADIO®**

- 1968
  - Twin Cities station began construction of transmitter for KSJN-FM
- 1970s
  - Needed greater exposure and funding
  - Music brought back and forth between SJU and Saint Paul
  - Fr. Colman saw that MPR needed to be independent
    - Saint John's gave up two-years of operating expenses, the studio, and the investment in Kling's education, although they were later repaid the start-up expenses
- 1980
  - MPR's Saint Paul headquarters opened
- 1983
  - MPR also formed the basis for American Public Radio (APR), which in 1994 became known as Public Radio International (PRI).
- 2004
  - MPR left PRI and formed American Public Media (APM), of which Bill Kling was president.



# LPs donated to CSB and SJU

- 1995:
  - With conversion to digital audio, MPR donated 20,000 LP records to CSB and SJU
- Donation ranged from sacred music and operas to traditional Bahamian folksongs.
- Over 5,000 jazz albums came from the Ray Marklund Archive
  - Supported the Leigh Kamman show, *Jazz Image*
- Donation included MPR card catalog
  - Consisting of 93 linear feet of boxed index cards.



Ray Marklund Label on Jazz LP



# LPs at CSB+SJU today

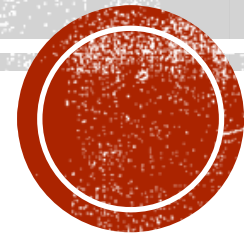
- 20,000 albums tucked into cabinets throughout the Benedicta Arts Center at CSB in Saint Joseph, Minnesota.
  - One room of shelves contains opera recordings, possibly more than 500.
  - Another locker opens to reveal 230 Soviet LPs, with recordings by orchestras such as the USSR Symphony Orchestra and the Moscow Philharmonic
  - Over 5,000 jazz albums in BAC Music Library include a recording of the 1965 Moscow Jazz Festival.



The Benedicta Arts Center (BAC) Music Library. The 5,000 Jazz albums are housed on 2 sides, 1 seen fully here.



# CSB+SJU and MPR Relationships



# Internship

- Gary Eichten began 50-year MPR career at KSJR in 1967 as SJU sophomore
  - His legacy continues with the Gary Eichten Fellowship, originally a paid, 10-week summer internship program for CSB+SJU students
    - Students learned the basics of news writing, reporting and production work with goal to write and produce material for MPR newscasts.
  - Now open to general public and called MPR internships



Mark Zdechlik '87 began his three-decade reporting career with MPR while still an undergraduate at Saint John's.



Gary Eichten '69 explains the functions of the control board in the KSJR-FM studio to former Eichten Fellowship interns Michael Swearingen '17 (center) and Jake Schultz '15.



# Still Involved

- Although it is impossible to list everyone and their involvement, other MPR personnel remain involved as well, such as Michael Barone, who spoke at the dedication and blessing of the Saint John's Abbey organ expansion in 2021.
- 2013
  - Hosted by the McCarthy Center, Gary Eichten '69, spent a week at CSB+SJU as the sixth annual scholar-in-residence
  - In addition to other activities that week, several students were able to meet with him for informational interviews
- 2016-17
  - Kristi Booth and Gary Osberg from MPR have mentored KJNB general manager Nick Kazeierczak, meeting with him several times during his tenure at KJNB.

## Eichten shares tips with students



EVAN GRUENES • etgruenes@csbsju.edu

MPR founder Gary Eichten visited CSB/SJU and participated in numerous events. These included an informal interview and a student debate on marijuana legalization. The McCarthy Center hosted his stay. (Left) Professor Nick Hayes.

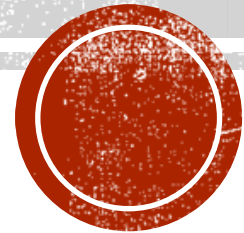
MPR founder Gary Eichten (right) visited CSB/SJU and participated in numerous events. These included an informal interview and a student debate on marijuana legalization. The McCarthy Center hosted his stay. (left) Professor Nick Hayes.



# A century of radio!



SJU Abbey Church



# References

Barry, Colman J. *Worship and Work : Saint John's Abbey and University 1856-1992*. [3rd ed.]. Collegeville, Minn.: Liturgical Press, 1993.

CSBSJU Newsroom. "Public radio pioneer William Kling to receive Colman Barry Award from SJU." April 4, 2007. <https://www.csbsju.edu/news/public-radio-pioneer-william-kling-to-receive-colman-barry-award-from-sju>

CSBSJU Newsroom. "SJU graduate William Kling's love of medium built networks." May 5, 2014. <https://www.csbsju.edu/news/bill-kling>

DeLand, Dave. *Saint John's Magazine*. Winter/Spring 2017 p 10-13. [https://issuu.com/csbsju/docs/2017\\_winter\\_spring\\_magazine\\_full\\_si/12?e=1392978/45928006](https://issuu.com/csbsju/docs/2017_winter_spring_magazine_full_si/12?e=1392978/45928006)

Thimmesh, Hilary. *Headwaters* (CSB/SJU Faculty journal), no. 24, 2007, p. 17. <https://www.csbsju.edu/csb-archives/csbhistory/csbmiscellaneouslists/headwatersandsymposiumtableofcontents/sjuandminnesotapublicradio>

Thimmesh, Hilary. *Saint John's at 150 : A Portrait of This Place Called Collegeville, 1856-2006*. Collegeville, Minn.: Saint John's University Press, 2006.

SJU Alumni Magazine 1966-07. Vol. 6, no. 2, Summer. <https://cdm.csbsju.edu/digital/collection/SJUArchives/id/1128/rec/7>

CSB/SJU Archives. *The Record*. 1923 March 1; 1928 May 10, 2024; 1928 October 4; 1929 February 21; 1939 December 7; 1940 February 5; 1949 January 20; 1951 September 27; 1952 November 21; 1952 December 12; 1953 September 25; 1954 September 24; 1954 December 3; 1957 February 8; 1957 December 6 ; 1958 September 26; 1958 November 28; 1960 February 12; 1961 December 8; 1962 November 16; 1964 March 20; 1965 October 18; 1966 October 14; 1975 September 29; 1977 September 3; 1992 September 17; 1998 September 10; 2000 November 9; 2003 January 30; 2005 January 20; 2008 October 10; 2011 February 18; 2013 February 15; 2014 September 12; 2017 April 28; 2019 April 12; 2019 November 1. <https://cdm.csbsju.edu/digital/collection/CSBArchNews>

CSB/SJU Archives. *The Torch*. 1965 Feb 5; 1965 March 9; 1965 November 5. <https://cdm.csbsju.edu/digital/collection/CSBArchNews>

Roske, Peggy L., "Wireless at St. John's: The Early Days of Radio on the Campus" (2019). Archives History Lessons. 98. [https://digitalcommons.csbsju.edu/archives\\_history\\_lessons/98](https://digitalcommons.csbsju.edu/archives_history_lessons/98).





# THANK YOU!

# QUESTIONS?



Bonnie Finn  
Fine Arts Librarian  
College of Saint Benedict and Saint John's University  
Clemens Library B102  
Saint Joseph, MN 56374  
[bfinn001@csbsju.edu](mailto:bfinn001@csbsju.edu)

