

The Compass: Earth Science Journal of Sigma Gamma Epsilon

Volume 84 | Issue 1

Article 10

1-6-2012

The Compass, Volume 1, Number 1, 1920

Follow this and additional works at: <https://digitalcommons.csbsju.edu/compass>



Part of the [Earth Sciences Commons](#)

Recommended Citation

(2012) "The Compass, Volume 1, Number 1, 1920," *The Compass: Earth Science Journal of Sigma Gamma Epsilon*: Vol. 84: Iss. 1, Article 10.

Available at: <https://digitalcommons.csbsju.edu/compass/vol84/iss1/10>

This Article is brought to you for free and open access by DigitalCommons@CSB/SJU. It has been accepted for inclusion in The Compass: Earth Science Journal of Sigma Gamma Epsilon by an authorized editor of DigitalCommons@CSB/SJU. For more information, please contact digitalcommons@csbsju.edu.

SIGMA GAMMA EPSILON COMPASS

Mining

Geology

Metallurgy

VOL. I.

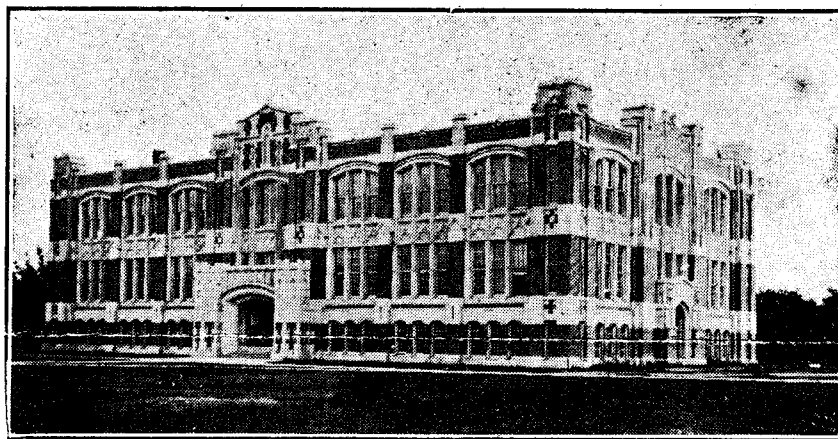
May 15, 1920

NO. 1

History of the SIGMA GAMMA EPSILON FRATERNITY

About ten years ago there existed in the University of Kansas an organization among the students of mining engineering known as the Mining Journal. The students in geology had no organization, but a geology club was organized in 1912. The students in mining engineering and geology were members of both organizations. Each club met every four weeks, so that a meeting took place every two weeks. This situation was in existence in the fall of 1914. At a meeting of one of the clubs in October of 1914, the students were considering methods of increasing interest in the clubs and ultimately I was called on for suggestions. One of the fellows had stated that in the Department of Chemistry there was a fraternity to give momentum to anything that the students in chemistry might undertake. I do not remember what suggestions I made, but among other things I stated that if a professional fraternity was all that was needed to develop interest, they need not worry as there was absolutely nothing to deter them from organizing one of their own.

Along in February of 1915, Clark Carpenter, one of the seniors in mining engineering, asked me if he and three other seniors might come down some evening and talk over a matter which they had been considering. At the appointed time Clark Carpenter, Walter Rohrer, Charles Brown and Glenn Allen made their appearance. They stated that, following my suggestion of some months before, they had been considering the organization



Geology Building University of Oklahoma.

of a fraternity. After about a month's deliberation the four increased their number to eight through the addition of George Sammons, A. C. Culbertson, Sherwin Kelly and W. M. Foster. The fraternity was launched in May, 1915, the news being published in the University Daily Kansan and in Science. Beta was installed in the University of Pittsburg in December of 1915. Gamma entered in May, 1916 as the chapter in the University of Oklahoma and Delta in the University of Nebraska in March 1917 and Epsilon in the University of Missouri in 1919. Zeta was installed in the University of Texas in 1920.

The first convention was held at Lawrence, Kansas, in December, 1915. The second was held as a conference at Kansas City in April, 1918 and the third has recently been held at Columbia, Mo.

Fraternally yours,
W. H. TWENHOFEL,
University of Wisconsin

ALPHA CHAPTER Lawrence, Kansas

The Alpha Chapter holds its regular meetings on the second and fourth Thursday of each month at various places, frequently in the Geology Building, and frequently at other fraternity houses. Our regular meetings have been very interesting, besides instructive. Most of our members worked with the K.S.G.S. during the summer of 1919, and have very interesting subject material. Our last regular meeting was an initiation, held in the geology building, at which we initiated four new members, one being Wallace E. Pratt, a graduate in geology at K. U., initiated to honorary membership. Mr. Pratt was recently elected president of the American Association of Petroleum Geologists. After the initiation our Third Annual Banquet was given at the Congregational Parish House, at

(Continued on Page 4)

Sigma Gamma Epsilon
COMPASS

Published May 15 and November 15.
W. A. TARR, University of Missouri,
Grand Editor.

One of the important pieces of work done by the National Convention at Columbia was the founding of The Compass. It is the plan of the society to issue the Compass twice yearly, on the fifteenth of May and November. This is the first issue, and is somewhat of a tryout. Letters were sent to each chapter asking for news and the response has been very generous. The articles received are published over the signature of each associate editor. The Grand Editor, Dr. W. A. Tarr, is not in residence at the University of Missouri this quarter, hence the work of getting out this copy has devolved upon a sort of assistant editor. It is hoped that all contributors will take full responsibility for manuscripts submitted, as the assistant has not had the time to do much else than hand the copy to the printer.

BETA CHAPTER
Pittsburgh, Pa.

With the opening of school last fall Beta Chapter was revived from the severe set back given it by the war with the return of Brothers Bollinger, Peters, Bixby, Wible, Kezer, Robinson, Sniarella and Shaefer.

Under the guidance of Brother Bollinger, plans were immediately set for getting in a bunch of new "blood," and the following men were honored with the "Diamond."

L. R. Brown, Pittsburgh, Pa.
B. Howe, Buffalo, N. Y.
H. Upham, Mt. Vernon, Ohio.
W. M. Patterson, Freeport, Pa.
D. R. Laughrey, Connellsville, Pa.
A. M. Weightman, Pittsburgh, Pa.
R. D. Campbell, Pittsburgh, Pa.
F. E. Eckert, Ridgeway, Pa.
J. R. Moon, Butler, Pa.
A. W. Foster, Pittsburgh, Pa.

Initiation took place at the next meeting, and with this new aggregation, Beta started to do things. Although handicapped somewhat by not having a Chapter House of our own, in which a more fraternal spirit could be developed, meetings were held every two weeks, at which time talks were given by some of the more learned men of the mining and Petroleum

Industry upon the various phases of the game.

The first semester found us all riding on top, and with the exception of withdrawal of Brother Shaefer, because of illness, the second was started with a full force.

On March 24, Beta added to her list of active men, five new initiates: E. F. Kernan, Pittsburgh, Pa., A. J. Graham, Buffalo, N. Y., C. V. Milliken, Pittsburgh, Pa., E. E. Roth, Pleasantville, Pa., and S. Huntley.

Owing to the fact that several of the Brothers were out doing their bit during the recent railroad strike, our annual banquet, set for April 24, did not prove a success as far as turnouts were concerned, so that plans are now under way to put across a good one on May 29, at the Hotel Chatham.

With the election and installation of Brother H. Upham, President; F. Eckert, Vice-President; B. F. Robinson, Secretary and Treasurer; E. F. Kernan, Corresponding Secretary; B. Howe, Historian, and J. O. Nelson, Editor, Beta is well fitted to carry out the plans so outlined by her retiring officers.

It is hoped that next fall will find us firmly established in a house of our own, and the committee headed by our staunch alumnus, H. B. Mellor, has been selected to see it through.

The present chapter has taken it upon itself to carry out the novel idea of Brother Foster, which suggests a very plausible plan of keeping the various men in touch with the advances of the industries as well as with each other. The School of Mines at the University has been selected as the headquarters; Brother Upham in charge. All communications as outlined by the enclosure, being put together in the form of a single letter and mailed to the respective seniors and alumni. It is hoped that this can be carried out with the co-operation of every single man for the benefits derived will be ten fold.

J. O. NELSON.

GAMMA CHAPTER
Norman, Okla.

Gamma Chapter has sent out many men from the University of Oklahoma of which Sigma Gamma Epsilon may be proud. During the five years since its establishment about 80 students and members of the faculty have worn our ribbons and have been initiated into our fraternity, and of these practically all have made their mark,

in a greater or less degree, in the profession of geology.

It seems that a natural gravitation exists between the faculty here and the profession of consulting oil geology. In support of this theory may be cited men like Brothers Frank Buttram, C. N. Gould, C. H. Taylor, Irving P. Perrine and D. W. Ohern, all of whom were at one time on our geology department faculty. While here in school they did the pioneer work of organizing and making permanent the school of geology, and since they left us they have not forgotten. These men have helped put Oklahoma on the map as a center for oil geology.

It would be entirely too long a story for the purposes of this article to outline the histories of all our men who have departed to take up the work they prepared for while here. In a profession such as geology, in which, as the soldier said about blackjack, "there's always action for your money," a man becomes accustomed to varied experiences, and it would take more than one article to tell of the interesting careers of several of our members. Perhaps it is just as well that space will not permit these histories, for many of the readers of THE COMPASS would become impatient of reading stories no more unusual than their own.

Of the forty or fifty men now employed in the Mid-Continent field who are members of Sigma Gamma Epsilon, several have become prominent in the companies for which they work. For instance, both the chief and assistant chief geologists of the Marland Refining Company at Ponca City are members of our chapter. These are Brothers F. Park Geyer and F. L. Aurin. Other chiefs are Richard Conkling, of the Roxana Petroleum Co.; Charles R. Eckes, of the Texas Company; and L. C. Snider, of the Empire Gas & Fuel Company.

Brother E. L. DeGolyer, another Sigma Gamma Epsilon, is one of the best known of the Oklahoma geologists. He is connected with the Amarada Oil Co., with headquarters in New York. He was one of the pioneer geologists in the Mexican fields, and now ranks as an authority on the geology of the Tampico district.

Brother George Morgan, of the Emerald Oil Co., is now being sent to school at Columbia University, New York, by his company, and plans to

get his doctor's degree there. He has done much work in Mexico and South America.

Brother J. M. Armstrong returned a few weeks ago from Venezuela, where he had been working, and left a few days later for Colombia, S. A. Brother E. E. Boylan has also been working in South America, and at the present time is located in Panama.

Brother B. Leo Laird left in the middle of the semester for California, where he works for the Standard Oil Co. Before leaving he completed his work for a degree.

THE NATIONAL CONVENTION

The Third Annual Convention of Sigma Gamma Epsilon was held at the University of Missouri, Columbia, on April 2 and 3, 1920. Officers and delegates were present as follows:

W. H. Twenhofel, University of Wisconsin, Grand President.

E. F. Schramm, University of Nebraska, Grand Vice-President.

Charles E. Decker, University of Oklahoma, Grand Secretary-Treasurer.

A. C. Tester, University of Kansas, delegate.

R. C. Brehm, University of Nebraska, delegate.

Harry Miller, University of Pittsburg, delegate.

Wallace C. Thompson, University of Oklahoma, delegate.

Lester B. Bailey, University of Missouri, delegate.

The following program was carried out:

Friday

Morning—Reception of delegates and visits to University buildings and grounds.

Afternoon—Business session at 2 o'clock.

Address of welcome, Lester Bailey, President of Epsilon Chapter.

Response, Dr. W. H. Twenhofel, Grand President.

Regular order of business.

Evening—Banquet, Daniel Boone Tavern, 7 o'clock, (informal).

Saturday

Morning—Business session.

Afternoon—Excursion, Local Geology, direction of Dr. W. A. Tarr, University of Missouri.

At the Saturday morning business session the following officers were elected:

W. H. Twenhofel (Wisconsin), Grand President.

C. E. Decker (Oklahoma), Grand Secretary.

Harry Miller (Pittsburg), Grand Vice-President.

E. F. Schramm (Lincoln), Grand Historian.

W. A. Tarr (Missouri), Grand Editor.

ZETA CHAPTER

Austin, Tex.

The Zeta chapter of Sigma Gamma Epsilon, installed at the University of Texas, Austin, Texas, on April 30, 1920, now increases the total number of chapters to six, and extends the growth of the fraternity to the southern most point of the United States.

Eleven live and enthusiastic men were initiated, every one of whom is keenly interested in not only his own future welfare, but for the interest of the science. These men will undoubtedly take the interest of the fraternity greatly to heart, sparing no effort to make the Zeta chapter the best in Sigma Gamma Epsilon.

The installation was conducted by Carl G. Horn, installing officer from the Gamma chapter. The following men took the oath of membership: T. M. Prettyman, G. H. Parrish, G. M. Knebel, Jr., F. C. Dodson, George Clements, C. E. Yager, Jr., Frank E. Cane, Joseph W. Dawson, L. T. Barron, Lester A. Luecke, and Arthur Deen.

Immediately after the installation ceremony a short business meeting was held and the following officers elected: President, Arthur Deen; Vice-Pres., Frank E. Cane; Secretary-Treasury, G. Moses Knebel, Jr.; Cor. Secretary, G. H. Parrish; Historian, L. T. Barron; Editor, George Clements.

After the election of officers and other matters of business had been completed, a five course dinner was given in the banquet room of the Driskill to which, in addition to the members of the fraternity, the following guests were invited: Dr. J. A. Udden, Dr. F. W. Simonds, Dr. E. H. Sellards, Dr. J. W. Beede, Dr. H. B. Bybee (the two latter being honorary members), Prof. Whitney, Miss Florence Gill and Miss C. Knicker. "Short" talks by Drs. Simmons, Beede, and Sellards, Professor Whitney and C. G. Horn constituted the program.

Fraternally yours,
CHARLES E. DECKER.

THE MINING AND GEOLOGY DEPARTMENT AT K. U.

The Mining and Geology Department combined probably has seen, and is seeing this year, the most progressive year in its history. During the war we were at a decided disadvantage, both by having only a few students and by failure in being able to get them interested in their work. The second and third "quarters" of last year were only long enough to permit us to get our mining and geology departments reorganized. This year started out with a larger enrollment in this department than ever before, and a group of students intensely interested in their work. Professor A. C. Terrill having gone to Baxter Springs on the State Geological Survey, we started out this year under the new administration of Professor C. M. Young.

At the beginning of this school year, 56 men were enrolled in mining engineering and almost as many were majoring in geology, with the elementary classes crowded to overflowing. Our geology department at present has the second largest enrollment in the Middle West, Oklahoma University only exceeding us. Classes which last year contained only four or five students, this year contain thirty to forty in advanced work, while before noon on enrollment day this semester, the elementary classes were closed for lack of room, with enrollments of over 75 per class.

The teaching staff of the geology department consists of only four members—Dr. Erasmus Haworth, head of the department; Dr. R. C. Moore, (also State Geologist), Dr. W. P. Haynes, and Prof. F. L. Fleener. These men have been aided by seniors and graduates for lack of other help. Doctor Haworth, "Daddy" to all his students, however, has handed in his resignation to take effect at the end of this school year. The Mining Department is very inadequate, consisting of only two professors. Professor C. M. Young returns as head of the department, after having been away from K. U. since 1912. Professor R. L. Grider is his associate.

"Daddy" Haworth has been with the University of Kansas, as professor of geology, since 1892, and as head of the Department of Geology for 26 years. He has always been his students' friend and has won their

love and admiration by his enthusiasm for all their activities, both school and social. His method of educating has been to get men interested in their work rather than to require an excessive amount of work from them. Although we are very sorry Professor Haworth will not be with us next year, we are more than glad to take this opportunity to thank him for what he has done for our Department and wish him the greatest success in the commercial work. We're all for you, Daddy!

At a meeting of the American Association of Petroleum Geologists, at Dallas, Tex., March 18-'20, Doctor Haynes and Doctor Moore presented a paper on "An Outcrop of Igneous Rock in North Central Kansas." Several seniors and graduate students attended the convention. Wallace E. Pratt, a graduate in geology at K. U., was elected president of the association and Dr. R. C. Moore was elected editor for the Association's publications.

Other trips taken for the benefit of the mining students were an inspection trip to the lead and zinc fields of the Kansas-Missouri-Oklahoma district. The party also visited the coal strip-pits at Pittsburg.

At the beginning of this school year the students of the Department reorganized the auxiliary society of the American Institute of Mining Engineers in the form of the Mining and Geology Club, including the geology students from the College, whereas the old society included only miners. The object of the club is to hold regular meetings twice a month, with talks on practical subjects by students, faculty members and visitors. Another object is to promote the student activities of the Department. The officers are:

Paul Holland, President;

Ray P. Walters, Vice-President;

H. D. Cox, Secretary-Treasurer.

The club held its annual banquet at the Eldridge Hotel, April 13, and arranged the program as a special honor to Professor Haworth with Mr. Bradley Stoughton, national secretary of the American Institute of Mining Engineers, as the chief speaker. Speaking of "Backsights and Foresights," Professor Haworth gave a brief history of the Department and a few of his expectations for its future success.

The following day Mr. Stoughton

lectured on Human Engineering at a general convocation of the Engineering School. He also gave a lecture on Copper Mining in Arizona, and one on the manufacture of steel.

HAROLD MESSMORE, E. '21

PAUL HOLLAND, E. '21

PLANS AT GAMMA

With an enrollment in Geology as large as that at the University of Oklahoma, it is obvious that everyone cannot be a Sigma Gam, but everyone can be made to have a pride in the school and an interest in its welfare.

Gamma chapter is working continually for the upbuilding of the department of geology and the furthering of friendly relations between all the students, whether members of Sigma Gamma Epsilon or not.

To accomplish these aims Gamma chapter has given open meetings for the whole department, and tried other plans, but the most successful function of the past year was a mixer-smoker held for the men geology majors. (I specify men because there are seven women majors at O. U.) The mixer was held at the Phi Gamma Delta house on the evening of March 1, 1920. Apples and smokes constituted the refreshments. Besides a round of high-class stories and the recounting of field experiences a census was taken and it was found that half of the states of the Union were represented and that there were a number of men present that had done geological work in foreign countries.

It is the purpose now to make a mixer of this kind an annual affair as it serves to bring the students of geology in closer touch with each other and also helps Sigma Gamma Epsilon to get in touch with possible new members.

Gamma chapter of Sigma Gamma Epsilon held initiation for the following men on Wednesday, April 28: J. C. Stone, Roger Sawyer, James Hudson, Lee Goff, Virgil Cottingham, Olin G. Bell, Olan Staggs and Russel Conkling.

Initiation ceremonies were held in the geology building and were followed by a banquet at the Phi Gamma Delta house. As this was the last social affair of the year the activities and accomplishments of the year as well as plans and policies for the future were discussed.

ALPHA CHAPTER Lawrence, Kansas

(Continued from Page 1)

which Brother Tester acted as Toastmaster, and Mr. Pratt was chief speaker of the evening. Other toasts were offered by Brothers Arnold Bell, Dr. R. C. Moore, Sentry Reed, and Allen Tester.

Many of our members hold K. U. honors, are members of honorary fraternities, hold "K's," and the like:

Homer Eagles, E.'20, Schem 1919-20 (Honorary Senior Society); President of the Engineering School, 1919-20; member Ahoku.

Arnold Bell, E.'21, President of the Engineering School, 1920-21; is "K" man in football.

"Tad" Reid, E.'21, President of Junior Class, 1919-20; Schem 1920-21; holds "K" in football.

John Kinkel, E.'21, Vice-president of Men's Student Council 1919-20; member of Owl Society, an Honorary Junior Society; President of Sophomore class 1918-1919.

"Scrubby" Laslett, C.'20, Capt. football team 1919; has three "K's" in both football and basketball; Schem, 1919-20.

"Dutch" Uhrlaub, M.S. '20, holds three "K's" in basketball; was captain of basketball team, made all-valley team.

Sentry Reed, C.'20, member Phi Beta Kappa, honorary college fraternity.

Paul Holland, E.'21, president of Mining and Geology Club.

Arthur S. Johnson, member varsity tennis squad.

Frank Holland, Paul Holland, Howard Cress, members of Sigma Tau, honorary engineering fraternity.

Frank Holland, Paul Holland, John Kinkel, "Dutch" Uhrlaub, Homer Eagles, Ray Walters, members of Tau Beta Phi, honorary engineering fraternity.

Monta Wing and Allen Tester, were granted scholarships in geology by K. U. for 1920-21.

E. R. Elledge, Chas. W. Boughton, and W. O. Hilton, graduates, are on the K. S. G. S. Staff.

HAROLD MESSMORE, E.'21.

Brothers J. L. Foster and J. H. Clements still maintain their positions with the Pittsburgh Steel Company, Monessen, Pa.